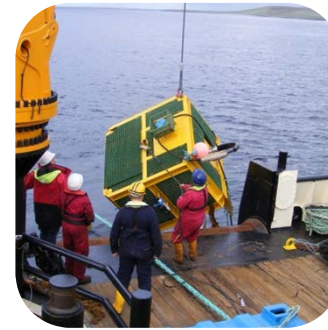
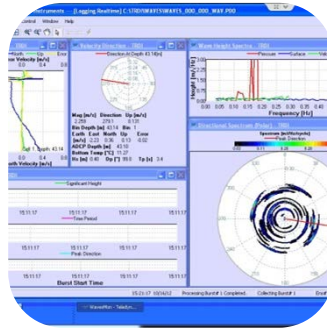


A GLOBAL CENTRE OF EXCELLENCE IN
MARINE ENERGY TESTING AND RESEARCH



EMEC Integrated Monitoring Platform

Oliver Wragg
Commercial Director

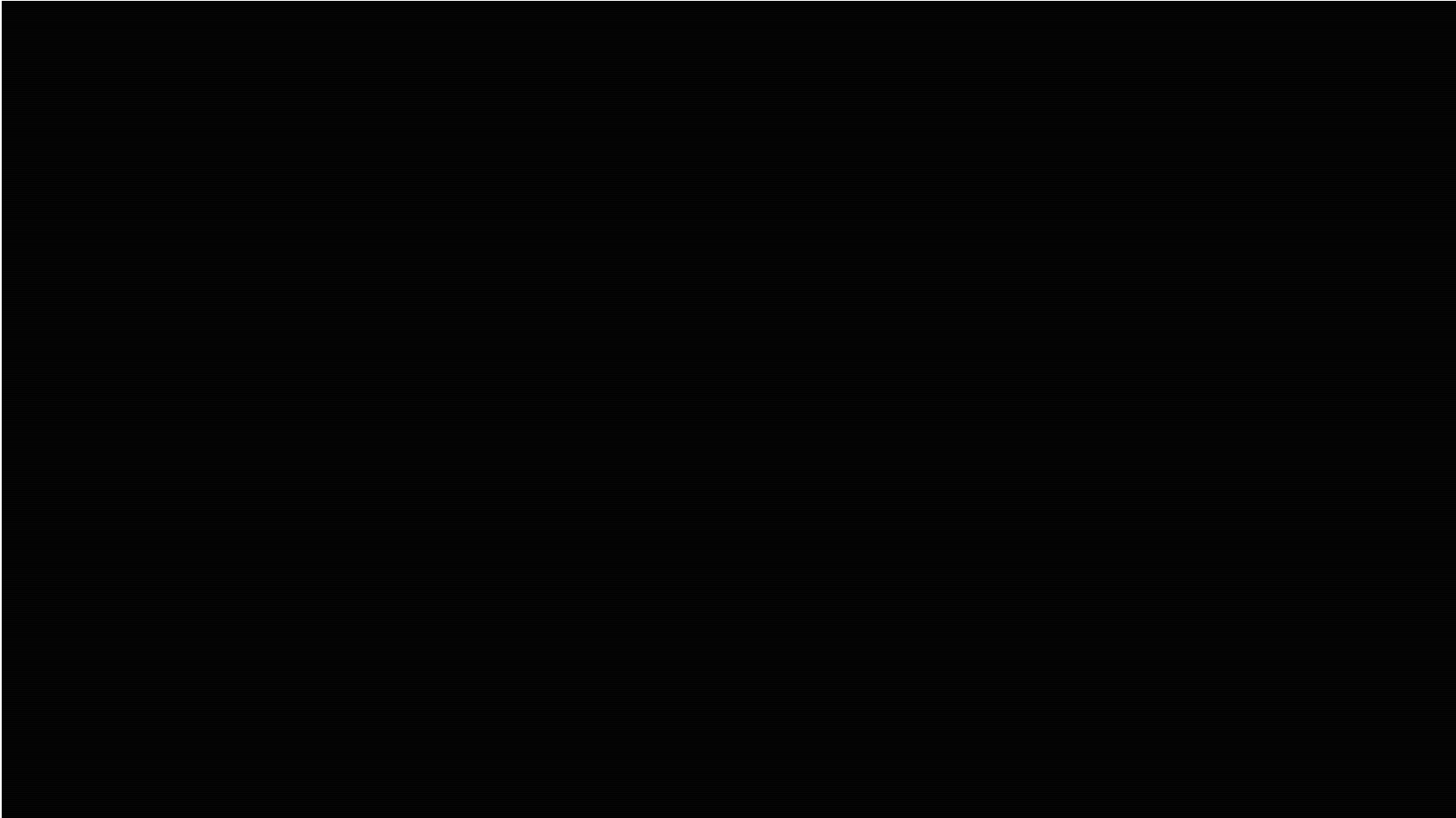
Facilities & experience

- **Purpose built facilities**
 - Laboratory accredited
 - Grid connected
 - 4 real sea test sites
- **World leading experience**
 - 10 years
 - Over 100 R&D projects

‘Learning by doing’



Tidal test site



Data collection timeline

2002



2005



2007



2009



2010



2013



2004



2005



2005



2008



2011



2012



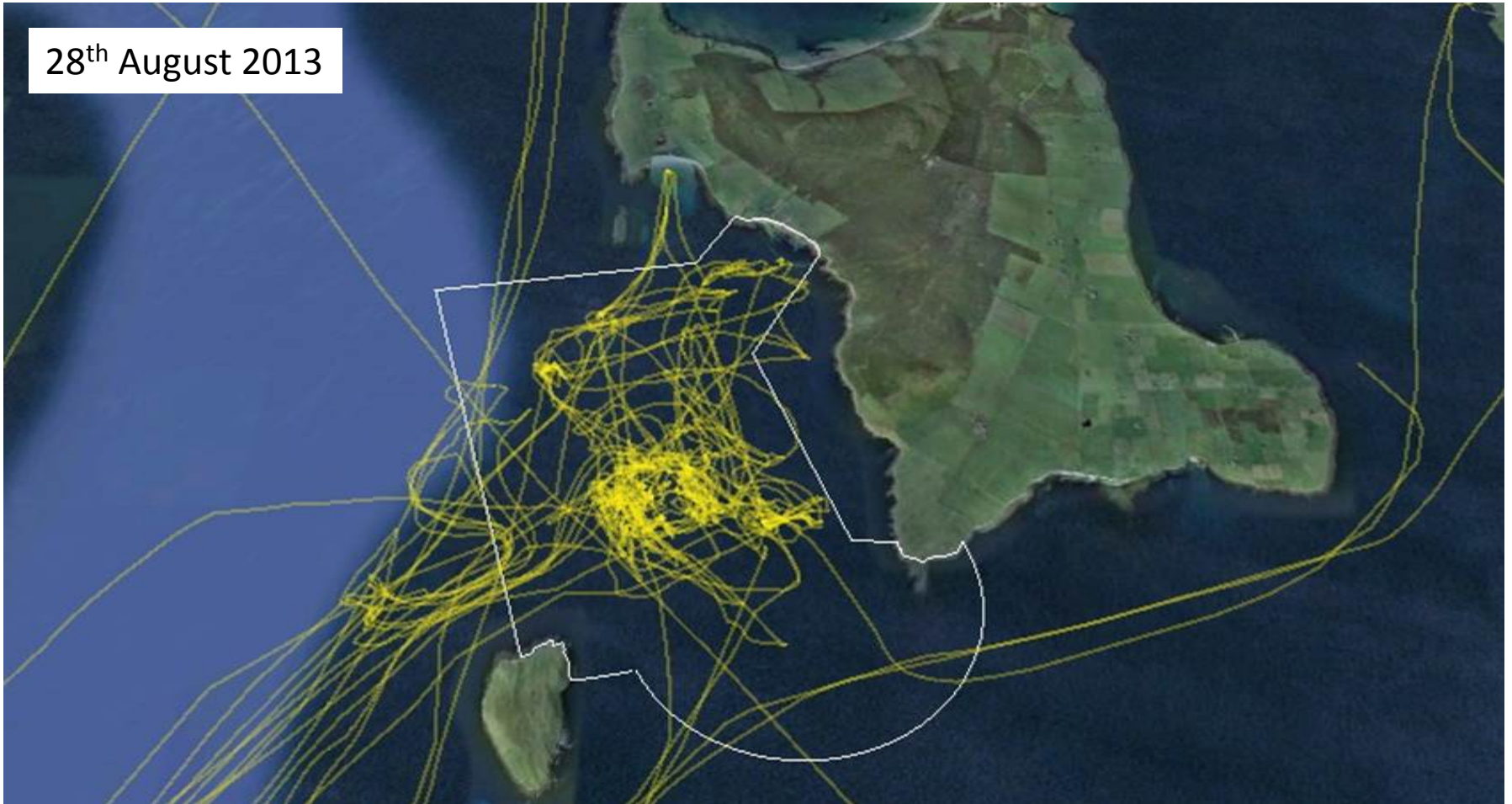
Billia Croo
Fall of Warness

Data for device testing

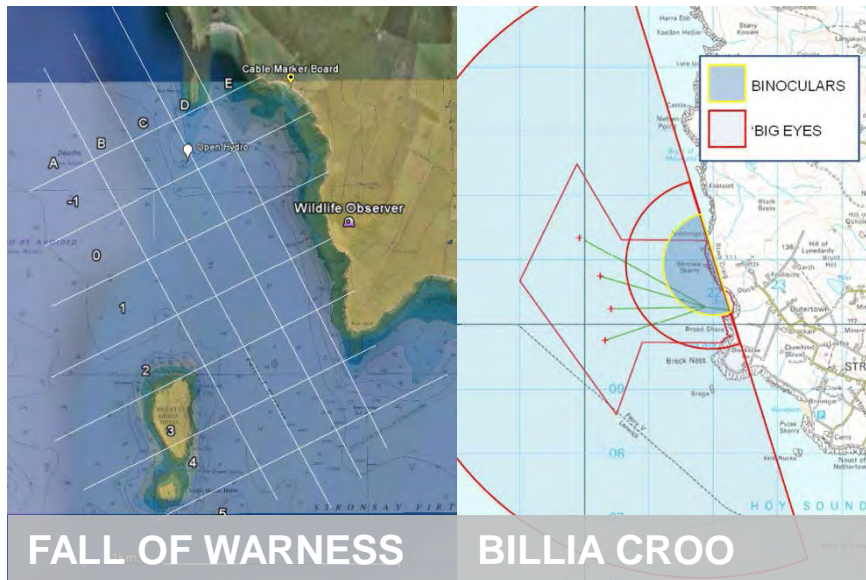


Data for site management: Vessel tracking

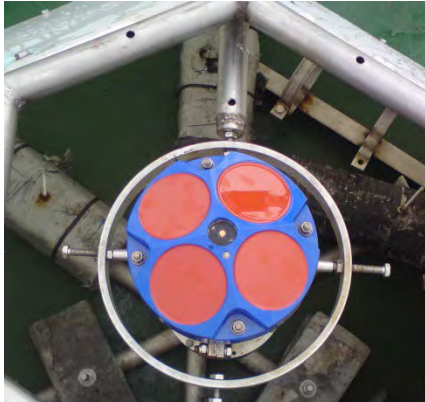
28th August 2013



Data for regulatory requirements



Data collection in high tidal flows: ADCP surveys



Spot ADCP



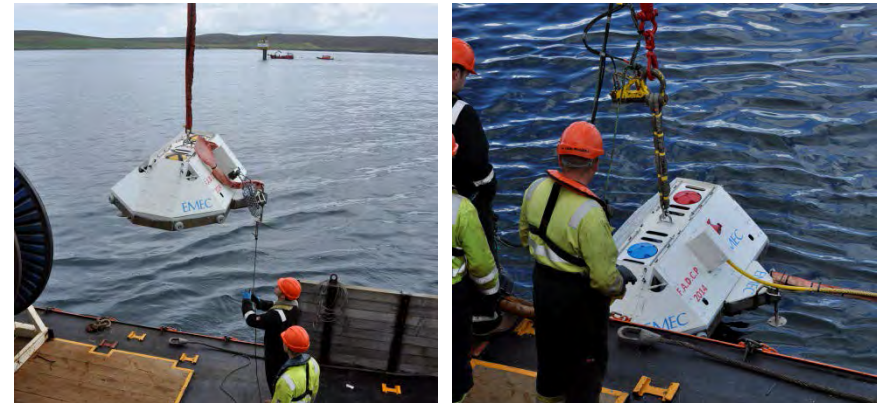
Spot ADCP prep



Real-time ADCP

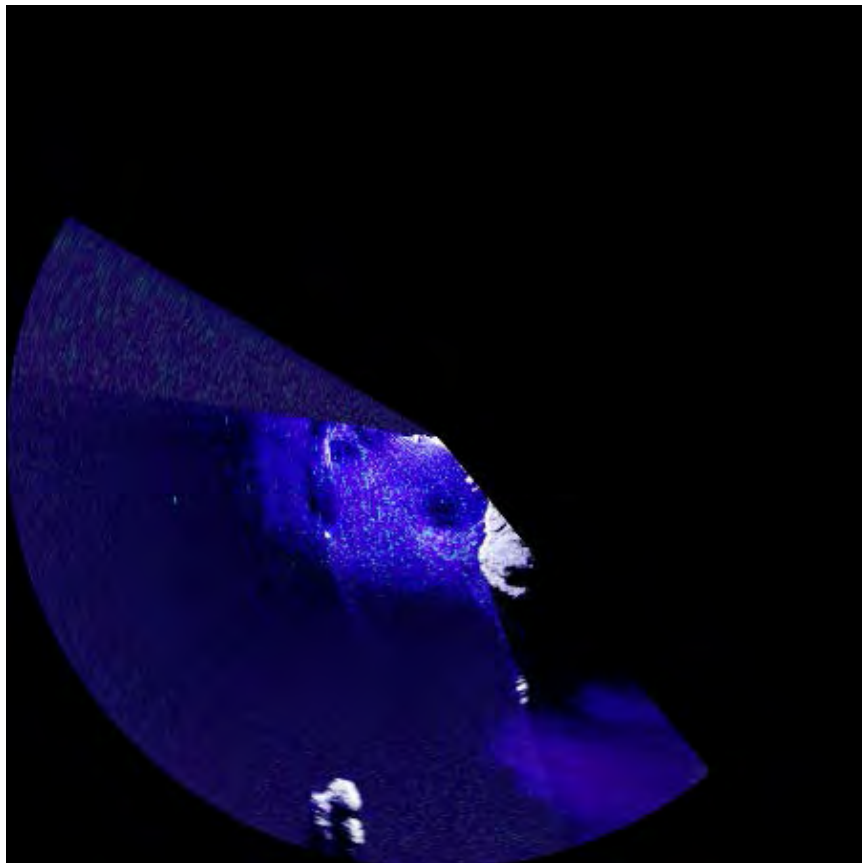


Spot ADCP deployment

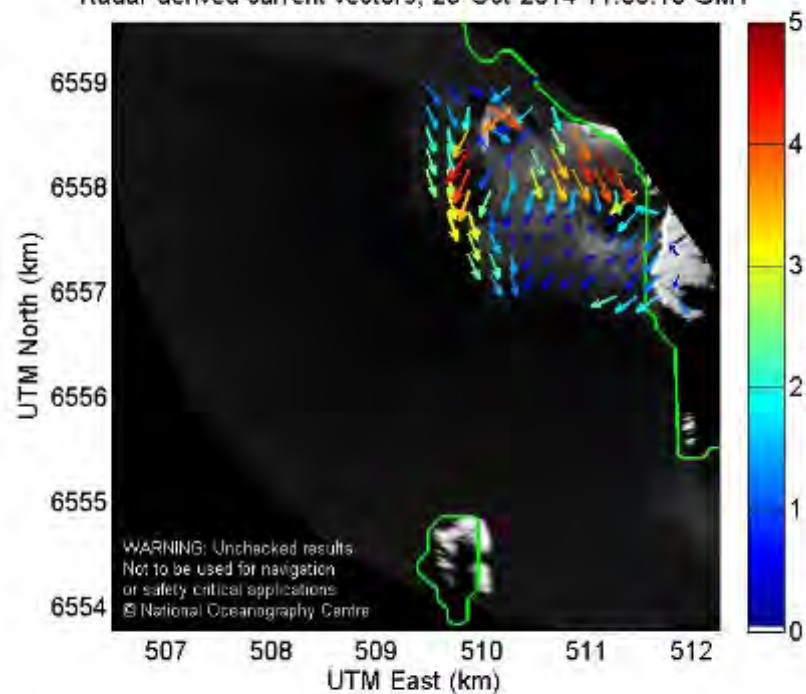


Real-time ADCP deployment

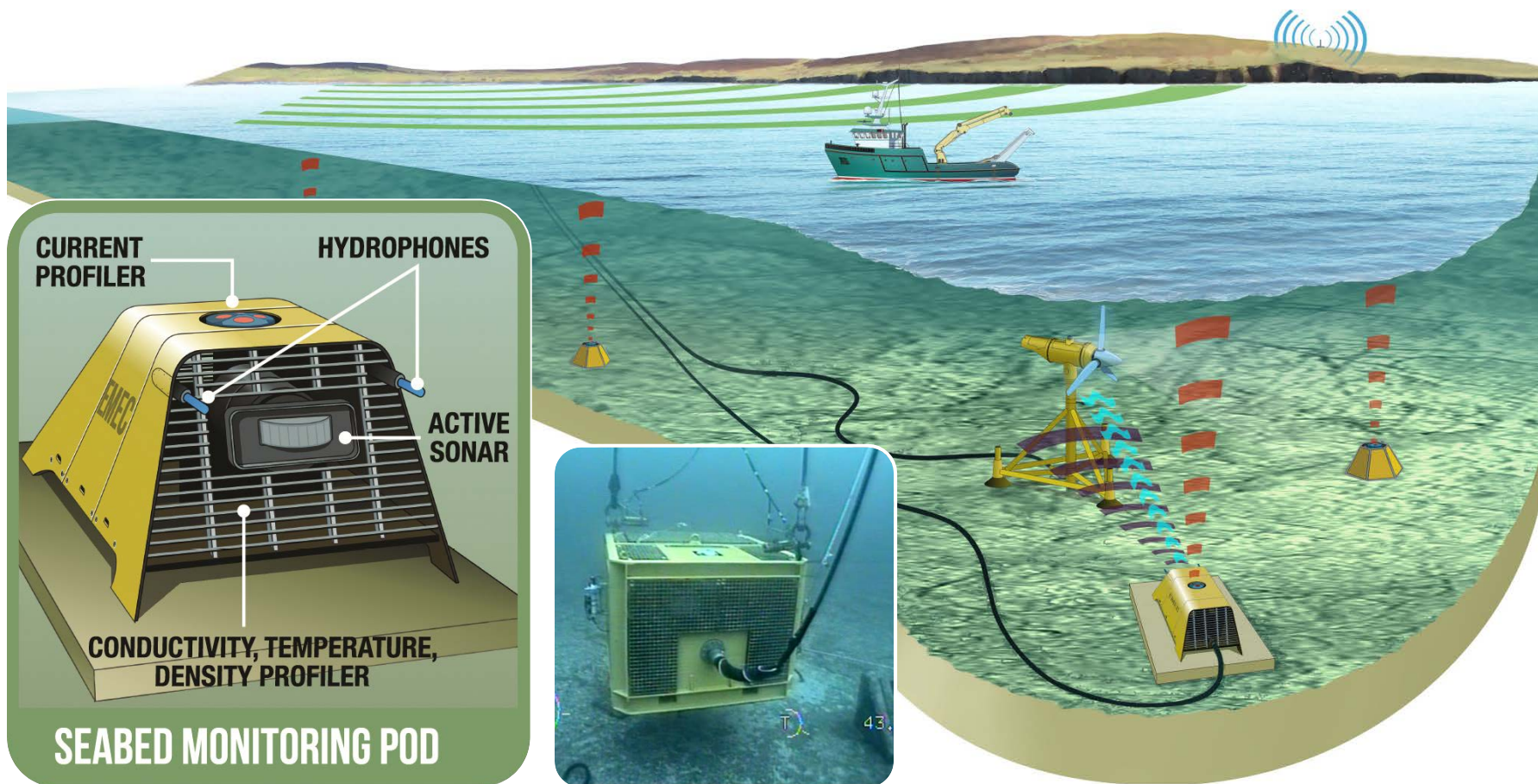
Next generation data systems: Marine Radar



Radar derived current vectors, 29-Oct-2014 11:00:13 GMT



Next generation data platforms: EMEC IMP



**CURRENT
PROFILER**

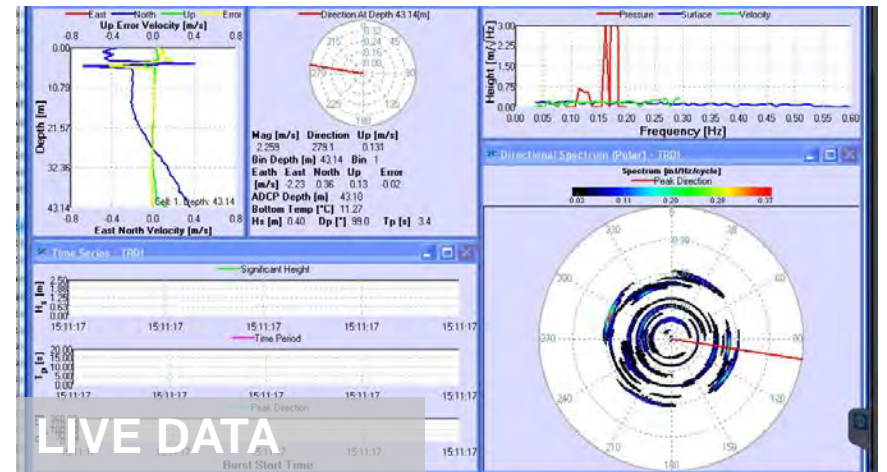
HYDROPHONES

**ACTIVE
SONAR**

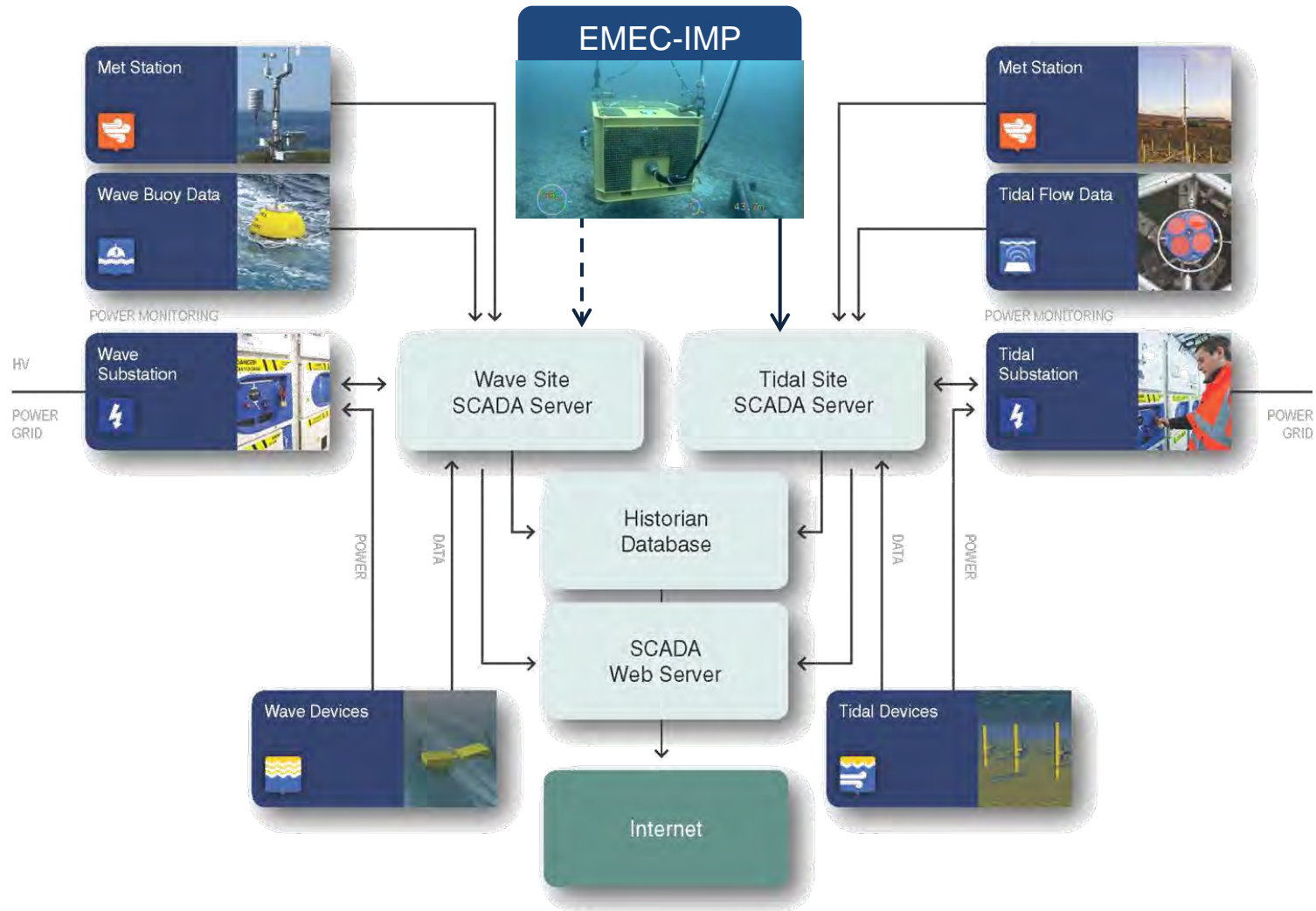
**CONDUCTIVITY, TEMPERATURE,
DENSITY PROFILER**

SEABED MONITORING POD

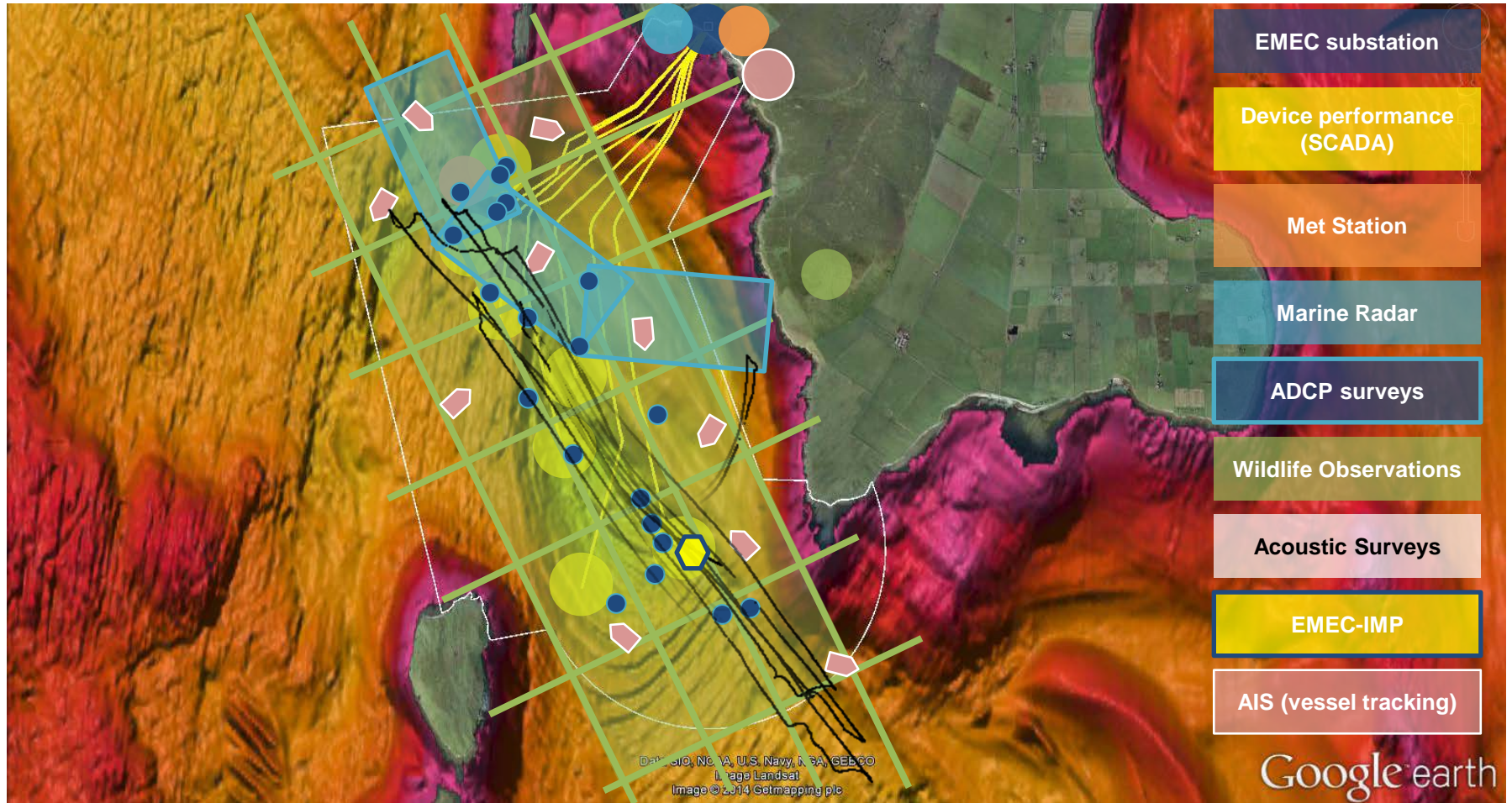
Standalone cabled data collection system



Data integration platform



Holistic site management tool



A GLOBAL CENTRE OF EXCELLENCE IN
MARINE ENERGY TESTING AND RESEARCH

EMEC 
ORKNEY
THE EUROPEAN MARINE ENERGY CENTRE LTD



EMEC can help your technology development

Visit us at the
Scotland pavilion

Follow us on:



Oliver Wragg

EMEC-IMP

© www.emec.org.uk