

SCIENTIFIC REPORTS



OPEN

Habitat-based cetacean density models for the U.S. Atlantic and Gulf of Mexico

Jason J. Roberts¹, Benjamin D. Best^{1,2}, Laura Mannocci¹, Ei Fujioka¹, Patrick N. Halpin¹, Debra L. Palka³, Lance P. Garrison⁴, Keith D. Mullin⁵, Timothy V. N. Cole³, Christin B. Khan³, William A. McLellan⁶, D. Ann Pabst⁶ & Gwen G. Lockhart⁷

Received: 18 November 2015

Accepted: 17 February 2016

Published: 03 March 2016

Cetaceans are protected worldwide but vulnerable to incidental harm from an expanding array of human activities at sea. Managing potential hazards to these highly-mobile populations increasingly requires a detailed understanding of their seasonal distributions and habitats. Pursuant to the urgent need for this knowledge for the U.S. Atlantic and Gulf of Mexico, we integrated 23 years of aerial and shipboard cetacean surveys, linked them to environmental covariates obtained from remote sensing and ocean models, and built habitat-based density models for 26 species and 3 multi-species guilds using distance sampling methodology. In the Atlantic, for 11 well-known species, model predictions resembled seasonal movement patterns previously suggested in the literature. For these we produced monthly mean density maps. For lesser-known taxa, and in the Gulf of Mexico, where seasonal movements were less well described, we produced year-round mean density maps. The results revealed high regional differences in small delphinoid densities, confirmed the importance of the continental slope to large delphinoids and of canyons and seamounts to beaked and sperm whales, and quantified seasonal shifts in the densities of migratory baleen whales. The density maps, freely available online, are the first for these regions to be published in the peer-reviewed literature.

The International Whaling Commission placed a moratorium on commercial whaling in 1986, curtailing the biggest direct anthropogenic threat to many cetacean populations. But other threats have persisted, such as bycatch in fisheries¹, ship strikes², oil spills^{3,4}, and other pollutants⁵. New threats have been recognized, including naval active sonar^{6–8}, other anthropogenic sources of noise^{9,10}, and climate change¹¹. In the United States, national laws protect cetaceans. The Marine Mammal Protection Act (MMPA) prohibits intentional or incidental killing, injuring, or harassment of cetaceans and specifies the circumstances and rules under which permits may be issued for such activities. The Endangered Species Act (ESA) prohibits harm to species threatened with extinction, including 16 cetacean species, and requires conservation of their habitat. The National Environmental Policy Act (NEPA) specifies the process by which U.S. national government agencies must evaluate the potential environmental effects of their actions, consider alternatives, and conduct public reviews. Agency actions that involve decisions to issue permits under the MMPA or ESA are usually subject to this process.

To evaluate the potential effects of proposed activities on cetacean populations, interested parties require a detailed understanding of the spatiotemporal distributions of these populations. Recent developments have created an urgent need for this information in U.S. waters of the Atlantic and Gulf of Mexico, when the U.S. Bureau of Ocean Energy Management (BOEM) proposed to open a large portion of the Atlantic continental shelf to oil and natural gas development and to expand oil and gas leasing in the Gulf of Mexico. Concurrently, the U.S. Navy began development of a new Environmental Impact Statement assessing the effects of training activities proposed for a large portion of the western North Atlantic, while the National Marine Fisheries Service (NMFS) proposed

¹Marine Geospatial Ecology Laboratory, Nicholas School of the Environment, Duke University, Durham, NC, USA. ²Bren School of Environmental Sciences and Management, University of California, Santa Barbara, CA, USA. ³Northeast Fisheries Science Center, National Marine Fisheries Service, Woods Hole, MA, USA. ⁴Southeast Fisheries Science Center, National Marine Fisheries Service, Miami, FL, USA. ⁵Southeast Fisheries Science Center, National Marine Fisheries Service, Pascagoula, MS, USA. ⁶Biology and Marine Biology, University of North Carolina Wilmington, NC, USA. ⁷Virginia Aquarium & Marine Science Center, Virginia Beach, VA, USA. Correspondence and requests for materials should be addressed to J.J.R. (email: jason.roberts@duke.edu)

to expand the geographic area designated as critical habitat for endangered North Atlantic right whales, and to reevaluate the status of regional populations of humpback and Bryde's whales under the ESA.

To estimate the abundance of cetacean species in U.S. waters and assess how they are distributed geographically and seasonally, NMFS and other U.S. government organizations have conducted visual line-transect surveys for over 35 years, yielding two parallel modeling efforts. One effort, prompted by the national regulatory framework, applied distance sampling methodology¹² to estimate the abundance of cetacean species within large geographic strata^{13–15}. The other, driven by a desire to describe cetacean habitats at a fine spatiotemporal scale, developed regression models that related the presence of cetacean species to environmental correlates such as sea surface temperature and then predicted the models across the seascape using gridded maps of the correlates, yielding fine-scale maps of habitat suitability^{16–18}.

Neither effort has proved entirely satisfactory for managing cetacean populations in the U.S. The regulatory framework requires an estimate of the number of affected individual animals in proposals for actions that could harm or disturb cetaceans. The broad-scale abundance studies estimated the number of individuals present in large geographic areas but these so-called “stratified models” did not show how they were distributed within each area. In contrast, the habitat suitability studies modeled spatial variability at fine resolutions, but produced estimates that used relative or unit-less scales (e.g. ranging from 0 to 1) that could not directly be used to estimate counts of affected individuals.

The last decade has seen a unification of these two approaches into a two-stage method known as density surface modeling^{19,20}, in which traditional distance sampling is coupled with multivariate regression modeling to produce density maps (individuals km⁻²) predicted from fine scale environmental covariates²¹. A challenge with density surface models (DSMs) is that a large number of sightings are needed to fit the regression model. Cetaceans are rare; often many surveys must be aggregated to obtain sufficient sightings. For example, a study of beaked whales in the eastern tropical Pacific aggregated 6 years of surveys to obtain just 90 sightings of Cuvier's beaked whale and 106 of *Mesoplodon* beaked whales²². This problem is exacerbated if the modeler desires to fit different models for different regions or seasons under the presumption that different behaviors occur in those places and times, e.g. that baleen whales on summer feeding grounds exhibit different environmental preferences than those on winter calving grounds.

Here, we present cetacean density models for the U.S. Atlantic and Gulf of Mexico. To maximize the number of taxa modeled and account for regional and seasonal variability, we aggregated nearly 1.1 million linear km of line-transect surveys conducted over 23 years by 5 institutions. We modeled density from 8 physiographic and 16 dynamic oceanographic and biological covariates, producing predicted density maps for 29 cetacean species and multi-species guilds, comprising 36 species in total. Results are freely available online at the Ocean Biogeographic Information System Spatial Ecological Analysis of Megavertebrate Populations (OBIS-SEAMAP) repository at <http://seamap.env.duke.edu/models/Duke-EC-GOM-2015>.

Results

The surveys contributed by the collaborators spanned the U.S. Exclusive Economic Zone (EEZ) of the Gulf of Mexico and eastern U.S., as well as a portion of Canada's EEZ (Fig. 1, Table 1). The Gulf of Mexico is partially isolated from the North Atlantic and exhibits distinct biogeography. To allow for the possibility that species-environment relationships differ between the Gulf of Mexico and western North Atlantic, we split our study area at 80.5°W into two analysis regions, the Gulf of Mexico (GOM) and East Coast (EC) and fitted density models to them separately.

To summarize the results, we grouped the cetacean species reported by the surveys into four taxonomic groups according to their phylogeny and ecology (Table 2, Supplementary Table S1): small delphinoids (i.e., small species of superfamily *Delphinoidea*), comprising harbor porpoise (*Phocoena phocoena*) and 11 dolphin species (genera *Delphinus*, *Lagenodelphis*, *Lagenorhynchus*, *Stenella*, *Steno*, and *Tursiops*); large delphinoids, comprising 7 species (genera *Feresa*, *Globicephala*, *Grampus*, *Orcinus*, *Peponocephala*, and *Pseudorca*); beaked and sperm whales, comprising 3 sperm whale species (genera *Kogia* and *Physeter*) and at least 6 beaked whale species (genera *Hyperoodon*, *Mesoplodon*, and *Ziphius*); and baleen whales, comprising 7 species (genera *Balaenoptera*, *Eubalaena*, and *Megaptera*).

In total, we incorporated 26,307 sightings into the analysis. Most small delphinoid and baleen whale sightings reported complete taxonomic identifications. A smaller number reported an ambiguous identification of two possible species (e.g. “fin or sei whale”) that we classified into one or the other using habitat variables (see Methods). In contrast, many sightings of the other two taxonomic groups reported ambiguous identifications, mainly owing to the difficulty of visually distinguishing species of pilot whales (*Globicephala melas* and *G. macrorhynchus*), beaked whales (*Mesoplodon* spp. and *Ziphius cavirostris*), and dwarf and pygmy sperm whales (*Kogia sima* and *K. breviceps*) from a distance. Lacking sufficient fully-resolved sightings to attempt a classification of these ambiguous sightings from habitat variables, we modeled these as three multi-species guilds (Supplementary Table S1). Finally, 5371 sightings were too taxonomically ambiguous to be incorporated into the analysis (Supplementary Table S2), resulting in an underestimation of density and abundance, due to some animals being sighted but not accounted for.

In the GOM, we modeled the density of 17 species and 2 multi-species guilds—beaked whales and *Kogia*. We fitted DSMs for all but 3 infrequently-sighted taxa; for these, we produced traditional stratified models that estimated mean density over the area they were likely to inhabit (see Methods). In the EC, we modeled 25 species and 3 guilds—beaked whales, *Kogia*, and pilot whales. Of these 28 modeled taxa, we fitted DSMs for 15 and stratified models for 13. The EC study area, spanning more than 20° of latitude, covered portions of two marine ecoregions—a northern, cold, productive region separated at roughly 35° N by the Gulf Stream Current from a southern, warm, less-productive region²³. By spanning more habitats, the EC yielded a higher species richness

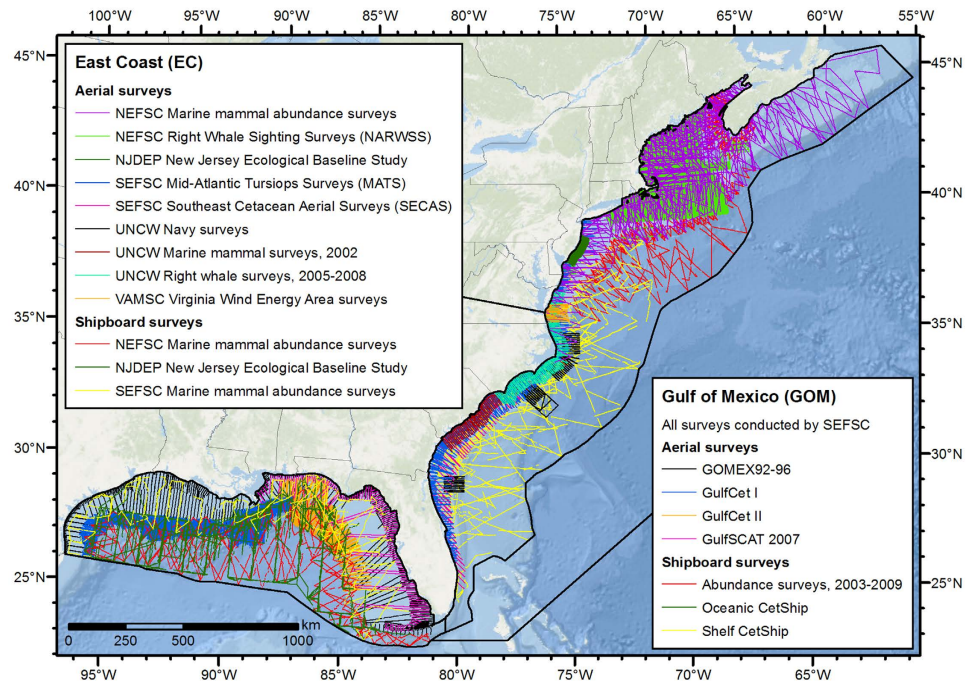


Figure 1. Analysis regions and line transect surveys used in this study. See Table 1 for more survey details. Surveyors: NOAA NMFS Northeast Fisheries Science Center (NEFSC), New Jersey Department of Environmental Protection (NJDEP), NOAA NMFS Southeast Fisheries Science Center (SEFSC), University of North Carolina Wilmington (UNCW), Virginia Aquarium & Marine Science Center (VAMSC). Figure produced with ArcGIS 10.2.2 (<http://www.arcgis.com>); background map credits: Esri, DeLorme, GEBCO, NOAA NGDC, and other contributors.

than the GOM, but because it only covered the extremes of some species' ranges, some species were sighted rarely and could not be modeled with DSMs.

We now turn to the results for individual models. It is not possible to give full treatment to each here; we discuss the four taxonomic groups instead. For each group, we present an aggregate density surface that sums the mean density surfaces of the taxa making up the group, then discuss patterns in distribution and highlight important results for individual taxa. The individual model results are available at the OBIS-SEAMAP repository (<http://seamap.env.duke.edu/models/Duke-EC-GOM-2015>), including density and uncertainty surfaces and summary reports that describe important taxon-specific modeling decisions and parameter estimates (e.g. $g(0)$) and provide diagnostic maps, plots, and statistical output.

Small delphinoids. Fewer small delphinoid species were sighted in the GOM than the EC. In aggregate, the models predicted a more uniform spatial distribution in the GOM and a more heterogeneous distribution in the EC (Fig. 2).

In the GOM, all species but two exhibited spatial distributions distinct from the others, consistent with prior suggestions of habitat partitioning among Gulf of Mexico odontocetes^{24,25}. In neritic waters, bottlenose dolphins dominated nearshore areas, while Atlantic spotted dolphins dominated the mid and outer shelf. In oceanic waters, Clymene dolphins concentrated in the western and central GOM, pantropical spotted dolphins in the east and center, striped dolphins in the northeast near the Mississippi Canyon, and spinner dolphins in moderately deep slope waters of the central and eastern GOM. Rough-toothed dolphins occurred on and off the shelf with no dominant spatial pattern; our model showed a slight association with high-slope bathymetry. Fraser's dolphins were sighted too infrequently to model with a DSM, but all sightings occurred off the shelf.

In the EC, four distinct zones emerged in the aggregate distribution of small delphinoids. In the first, the warm, neritic waters south of Cape Hatteras, bottlenose and Atlantic spotted dolphins dominated, similar to the GOM shelf, except that Atlantic spotted dolphins were concentrated only in the mid-shelf region. Close to the shelf break, they were displaced by the "offshore" ecotype of bottlenose dolphins²⁶. Throughout the shelf, several other species were also present, but in densities too low to model with DSMs.

The second zone, the neritic waters north of Cape Hatteras, is characterized by colder, nutrient-rich waters that exhibit high seasonal productivity. In the Mid-Atlantic Bight, our models predicted seasonal changes in species composition, however survey effort was limited in winter so these predictions must be viewed cautiously. In winter, the models predicted that harbor porpoises and Atlantic white-sided dolphins occupied the mid- and outer shelf, while in summer, these species moved north, giving way to bottlenose dolphins, which are known to migrate northward in summer²⁷, and Atlantic spotted dolphins. Short-beaked common dolphins were predicted to occupy the mid- and outer shelf. To the north—Georges Bank, the Gulf of Maine, Bay of Fundy, and Scotian

Region	Platform	Surveyor	Survey program	Years	Length (1000 km)	Hours	
EC	Aerial	NEFSC	Marine mammal abundance surveys ¹⁵	1995–2008	70	412	
			Right Whale Sighting Survey (NARWSS) ⁵¹	1999–2013	432	2330	
			NARWSS harbor porpoise survey ⁵¹	1999	6	36	
			NJDEP	New Jersey Ecological Baseline Study ^{52,53}	2008–2009	11	60
			SEFSC	Mid-Atlantic Tursiops Surveys (MATS)	1995, 2004–5	35	196
				Southeast Cetacean Aerial Surveys (SECAS) ⁵⁴	1992, 1995	8	42
			UNCW	Cape Hatteras Navy surveys ⁵⁵	2011–2013	19	125
		Jacksonville Navy surveys ⁵⁵		2009–2013	66	402	
		Marine mammal surveys, 2002 ²⁶		2002	18	98	
		Onslow Bay Navy surveys ⁵⁵		2007–2011	49	282	
		Right whale surveys, 2005–2008 ⁵⁵		2005–2008	114	586	
			VAMSC	Virginia Wind Energy Area surveys ⁵⁶	2012–2014	9	53
				Total:	1992–2014	837	4622
		Shipboard	NEFSC	Marine mammal abundance surveys ¹⁵	1995–2004	16	1143
			NJDEP	New Jersey Ecological Baseline Study ^{52,53}	2008–2009	14	836
	SEFSC		Marine mammal abundance surveys ⁵⁷	1992–2005	28	1731	
			Total:	1992–2009	58	3710	
GOM	Aerial	SEFSC	GOMEX92–96 ⁵⁴	1992–1996	27	152	
			GulfCet I ⁵⁸	1992–1994	50	257	
			GulfCet II ⁵⁹	1996–1998	22	124	
			GulfSCAT 2007	2007	18	95	
			Total:	1992–2007	117	628	
		Shipboard	SEFSC	Oceanic CetShip ¹⁴	1992–2001	49	3102
	Shelf CetShip ¹³			1994–2001	10	707	
			Marine mammal abundance surveys ⁶⁰	2003–2009	19	1156	
			Total:	1992–2009	78	4965	

Table 1. Line transect surveys used in this analysis. Length and hours are the cumulative linear distance and duration observers were on effort for each survey program (references given). See Fig. 1 for spatial effort. Surveyors: NOAA NMFS Northeast Fisheries Science Center (NEFSC), New Jersey Department of Environmental Protection (NJDEP), NOAA NMFS Southeast Fisheries Science Center (SEFSC), University of North Carolina Wilmington (UNCW), Virginia Aquarium & Marine Science Center (VAMSC).

Shelf—harbor porpoises and Atlantic white-sided and short-beaked common dolphins dominated, with lesser numbers of bottlenose dolphins and very low densities of white-beaked dolphins. Consistent with prior reports²⁸, harbor porpoises were predicted to aggregate in summer in the northern Gulf of Maine and lower Bay of Fundy and, to a lesser degree, off the southern tip of Nova Scotia.

The third zone, the oceanic waters of the Gulf Stream and southward, is consistently warm and nutrient-poor relative to the other zones. This area received relatively little survey effort except in specific areas along the shelf break (Fig. 1, UNCW Navy surveys), and our models' predictions should be viewed cautiously. Although species richness was high in this zone, aggregate density was lowest among the four zones. Bottlenose and Atlantic spotted dolphins were the most abundant species; this contrasts with the GOM, where their off-shelf density was very low.

The fourth zone, the oceanic waters north of the Gulf Stream, is cold and nutrient-rich. Although this area was predicted to sustain the highest aggregate density of dolphins of the four EC zones, almost all surveys here occurred in summer; caution must be exercised when utilizing our predictions in non-summer months. Highest densities occurred at the shelf break and along the continental slope, with bottlenose and short-beaked common dolphins concentrating here, and Atlantic white-sided dolphins to a lesser degree. Far from the shelf, striped, bottlenose, and Atlantic spotted dolphins dominated.

Finally, where the EC and GOM models met, at 80.5°W, an area of very low survey effort, the aggregate distribution of small delphinoids showed a clear discontinuity, with very low density predicted by the EC models and moderate density predicted by the GOM models. It may be possible to address this problem in a future revision of our models by including additional survey data or defining a new study area that spans both the Gulf of Mexico and southeast continental U.S.

Large delphinoids. Large delphinoids occurred in the GOM exclusively in oceanic waters (Fig. 3). Here, we modeled six species. Killer, false killer, and pygmy killer whales exhibited relatively uniform spatial distributions. Melon-headed whales were slightly less uniform, with higher abundance to the north. Risso's dolphins and short-finned pilot whales concentrated along the continental slope.

In the EC, we modeled five individual species and one guild, pilot whales. Pilot whales and Risso's dolphins predominated and were the only taxa sighted frequently enough to model with DSMs. Both were predicted to

Region	Taxonomic group	Sightings retained for analysis		Taxa modeled with	
		Fully-resolved	Ambiguous	DSMs	Stratified models
EC	Small delphinoids	10274	944	6	6
	Large delphinoids	817	823	2	3
	Beaked and sperm whales	581	181	2	2
	Baleen whales	7680	646	5	2
GOM	Small delphinoids	3061	151	7	1
	Large delphinoids	410	13	5	1
	Beaked and sperm whales	442	258	3	
	Baleen whales	18	8	1	1

Table 2. Sightings reported and taxa modeled. Fully-resolved sightings had a complete taxonomic identification. Ambiguous sightings that were retained for analysis were classified into one of the 29 modeled taxa (see Methods). Taxa modeled with stratified models were sighted so infrequently that a DSM could not be fitted; instead, we produced traditional mean density estimates for the geographic strata they were likely to inhabit.

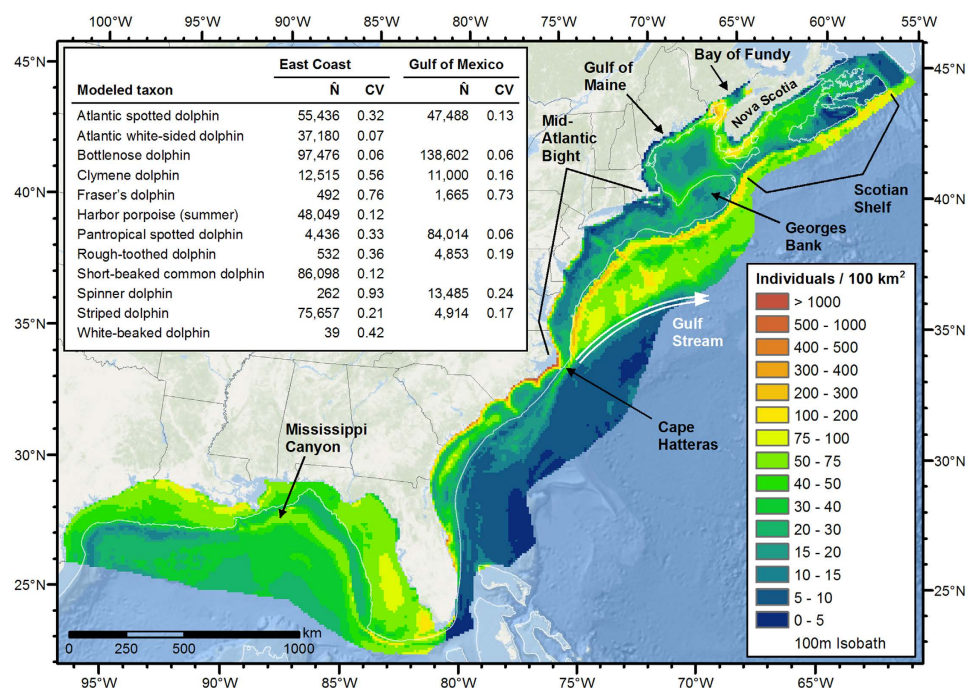


Figure 2. Predicted mean density of small delphinoids. The inset table lists the estimated mean abundance (number of individuals, \bar{N}) and associated coefficient of variation (CV) for each taxon. The estimates are the year-round mean except for harbor porpoise. Harbor porpoise was modeled with two seasonal models instead of a year-round model; the estimates listed are for the summer model, defined as June–October for this species. Figure produced with ArcGIS 10.2.2 (<http://www.arcgis.com>); background map credits: Esri, DeLorme, GEBCO, NOAA NGDC, and other contributors.

occur throughout oceanic waters, in highest density along the continental slope, consistent with prior reports^{29,30}. Pilot whales were especially concentrated off Cape Hatteras, just north of where the Gulf Stream separates from the shelf. Both were also predicted in lower density over the shelf in northern, cold, productive waters. We modeled the remaining four species with stratified models. Killer and false killer whales were sighted and assumed to occur both on and off the shelf, while melon-headed and northern bottlenose whales were sighted and assumed to occur only in oceanic waters.

Beaked and sperm whales. For beaked and sperm whales, deep-diving teuthivores, our models predicted patchy distributions concentrated in deep waters over high-relief bathymetry, in keeping with evidence of high prey density in these areas³¹. In the GOM, models predicted concentrations near off-shelf submarine canyons at the mouth of the Mississippi River and the central northern Gulf³², and along the continental slope (Fig. 4). In the EC, the models predicted highest densities along the continental slope, in and around submarine canyons, and

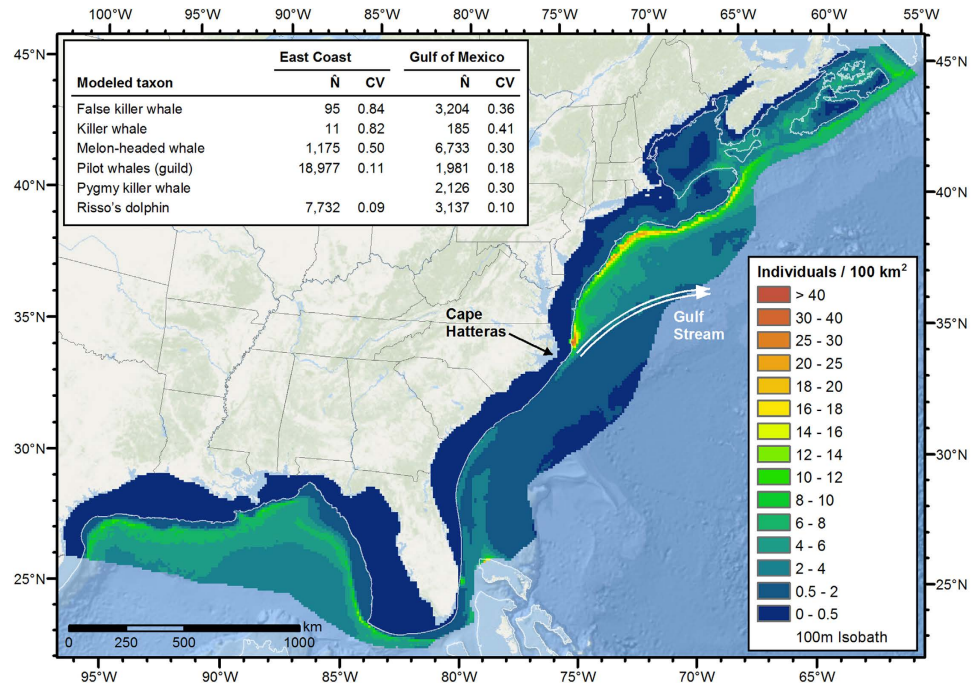


Figure 3. Predicted mean density of large delphinoids. The inset table lists the estimated mean abundance (number of individuals, \bar{N}) and associated coefficient of variation (CV) for each taxon. In the East Coast region, pilot whales comprised a guild of two species; in the Gulf of Mexico, only one pilot whale species was present. Figure produced with ArcGIS 10.2.2 (<http://www.arcgis.com>); background map credits: Esri, DeLorme, GEBCO, NOAA NGDC, and other contributors.

near seamounts, particularly in cold, productive waters, consistent with their reported habitats^{16,33}. The models also predicted sperm whales in northern shelf waters, but in much lower densities.

Baleen whales. Baleen whales were sighted mainly in the EC, where observers reported seven species. Blue whales and Bryde's whales were sighted very infrequently; we modeled them with stratified models. We modeled the five remaining species—fin, humpback, minke, sei, and North Atlantic right whales—with DSMs. Most baleen species undertake large seasonal migrations, moving into cold, productive waters in summer to feed and travelling to warmer, calmer waters in winter to calve or breed. Under the assumption they would express different habitat preferences during different times of the year, we split the survey data into seasonal strata with species-specific monthly ranges and fitted separate DSMs to each. For humpback and minke whales, we used two seasons; for right and sei whales, we used four. For fin whales, which remain in the area during winter in substantial numbers³⁴, we used a year-round model.

We predicted all baleen whale models at a monthly time step; all showed plausible temporal patterns in density that were consistent with the literature. To summarize the strong temporal dynamics, we present aggregate density maps for two months, July and January, representative of summer and winter. In July (Fig. 5A), the models predicted that baleen species aggregate in productive northern waters, concentrated near the continental shelf break and near on-shelf areas of high bathymetric relief, such as the edges of banks and ledges. Fin whales were most abundant, followed by minke, humpback, sei, and right whales.

In January (Fig. 5B), north of Cape Hatteras, density of all five species was predicted to be much lower, as most individuals were presumed to have migrated out of the study area to calving grounds, while some remained to overwinter, consistent with reports of lower but non-zero wintertime abundance of these species^{34–37}. We lacked sufficient survey effort in Canadian waters to offer predictions for this area in winter models of humpback, minke, right, and sei whales. This situation did not apply to the year-round model fitted for fin whales. This model predicted fin whales in Canadian waters throughout the year in areas of high relief, especially in the vicinity of the Gully, a submarine canyon at the outer edge of the Scotian Shelf. While fin whales consistently inhabit the Gully in summer³⁸, their status in winter is unknown, although fin whales have been reported in December in other northern areas, including western Greenland and the Gulf of St. Lawrence^{39,40}. South of Cape Hatteras, our winter models predicted North Atlantic right whales in high density in their near-shore calving grounds, and other species present in broader areas in lower densities. The winter minke whale model predicted moderate density off the shelf, consistent with acoustic monitoring results and the hypothesis that the area is a minke whale calving ground⁴¹.

In the GOM, surveys reported on-effort sightings of only two baleen whale species. A single fin whale was sighted in the western Gulf at the shelf break. Fin whales do not inhabit the northern Gulf of Mexico, but our process was to model all species reported while observers were on effort, regardless of rarity; accordingly, we

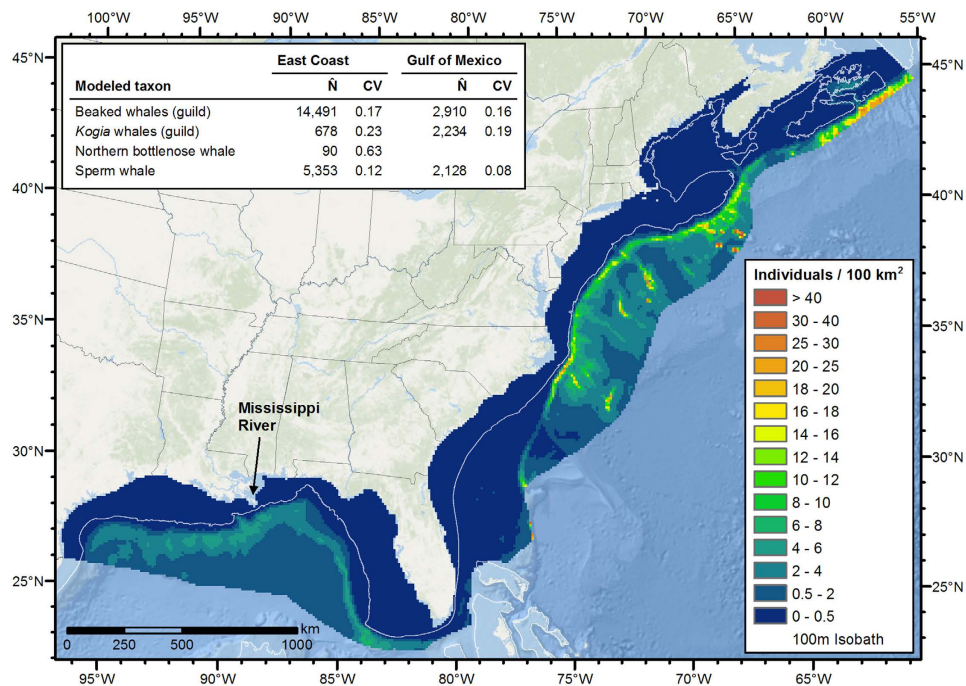


Figure 4. Predicted mean density of beaked and sperm whales. The inset table lists the estimated mean abundance (number of individuals, \bar{N}) and associated coefficient of variation (CV) for each taxon. Figure produced with ArcGIS 10.2.2 (<http://www.arcgis.com>); background map credits: Esri, DeLorme, GEBCO, NOAA NGDC, and other contributors.

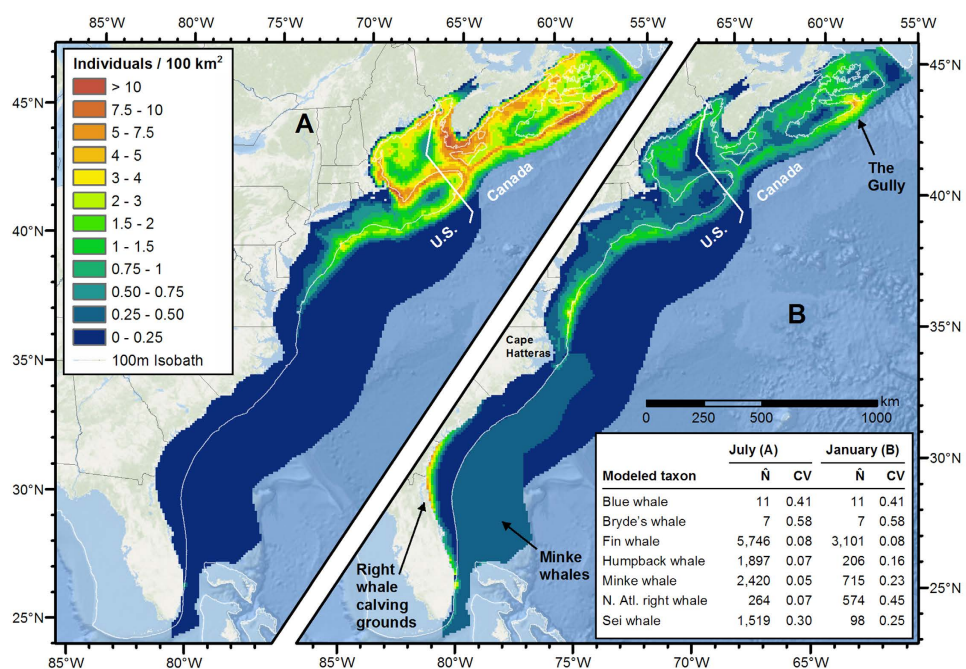


Figure 5. Predicted mean density of baleen whales in July (A) and January (B) for the East Coast region. The inset table lists the predicted mean monthly abundance (number of individuals, \bar{N}) and associated coefficient of variation (CV) for each taxon. Figure produced with ArcGIS 10.2.2 (<http://www.arcgis.com>); background map credits: Esri, DeLorme, GEBCO, NOAA NGDC, and other contributors.

incorporated this extralimital sighting into a GOM-wide stratified model. For the other species, Bryde's whale, we fitted a limited DSM designed to reflect their distribution along the northeast Gulf slope.

Discussion

The goal of this effort was to develop the most comprehensive and detailed models of cetacean density possible for our study regions. To this end, we aggregated a very large collection of survey data (23 years) to maximize our coverage of cetacean species, seasons, and geographic areas. We then applied a modeling strategy that scaled the spatial, temporal, and taxonomical resolution of models according to how frequently taxa were sighted, how easy they were to identify, and what was known of their ecology. At one extreme—species that were sighted frequently, easy for observers to identify, and well known in the literature, such as the most common baleen whales—our strategy was to fit species-specific DSMs with seasonal and sub-regional strata, allowing seasonal and regional differences in species-environment relationships to be modeled explicitly. When our data suggested seasonal movements and the literature concurred, we made predictions at monthly resolution, to reproduce temporal shifts in density as species migrate. At the other extreme—species that were rarely sighted, hard to identify, and poorly known, such as *Kogia* in the EC region—our strategy was to revert to traditional stratified models, model multiple species together as a guild, or both, reflecting the relative scarcity of information. When reasonable, we substituted data from other regions to compensate, e.g. by drawing upon sightings from external surveys to improve fits of detection functions, or utilizing estimates of availability and perception bias from external studies when none were available from studies in our region. For the middle ground—species that were sighted at modest rates and moderately well known, such as many of the oceanic odontocetes—our strategy was to fit single-season DSMs and provide year-round average predictions, reflecting a modest confidence in what was known of these species' distributions. This scaling of methodology to available data and knowledge made our modeling strategy adaptable to the variety of distributions and abundances of cetacean species found in the U.S Atlantic and Gulf of Mexico.

In total, we developed DSMs for 84% of the taxa sighted in the GOM and 54% sighted in the EC, and produced monthly predictions for 11 taxa (Supplementary Table S3). This represents an increase over prior habitat-based cetacean modeling efforts^{17,42–44} both in the number of taxa modeled and the spatial extent and temporal resolution of predictions. The availability of these more taxonomically and spatiotemporally comprehensive results, at finer temporal resolution, is especially useful for strategic marine spatial planning of human activities that are potentially harmful to cetaceans, particularly for endangered migratory species. However, it is important to bear in mind that in the U.S. the MMPA requires that cetaceans be managed on a per-stock basis (the statute defines a “stock” to be “a group of marine mammals of the same species or smaller taxa in a common spatial arrangement that interbreed when mature”) and that NMFS recommends that data older than 8 years not be used to estimate stock-level parameters required by the statute such as the Minimum Population Estimate (N_{\min}) or Potential Biological Removal (PBR)⁴⁵. Thus our results may not be directly suitable for estimating these parameters, especially for species that exhibit complex stock structure within our study area, such as bottlenose dolphins. Nevertheless, the NMFS stock assessment process does not produce spatiotemporally-explicit descriptions of cetacean stocks (i.e. density maps), and our results remain the best available alternative for spatiotemporally-explicit management problems, such as those that require estimates of potential cetacean “takes” resulting from proposed human activities.

In addition to providing unprecedented taxonomical coverage and temporal resolution, we were able to develop models that considered a wider range of dynamic oceanographic features than have previously been incorporated into cetacean density models (Supplementary Table S3). By including covariates related to meso-scale fronts and eddies, as well as several formulations of biological productivity, we sought both to improve the explanatory and predictive power of our models and to test the importance of these predictors relative to more commonly-used predictors such as bathymetry and sea surface temperature (SST), thereby contributing to the understanding of these species' spatial ecology. Although these results are not the focus of this paper, we discuss some of them in the species-specific reports that are available online with the predicted density surfaces through the OBIS-SEAMAP repository (<http://seamap.env.duke.edu/models/Duke-EC-GOM-2015>).

Our models provide a new baseline for understanding the ecological relationships and conservation status of cetaceans in the western North Atlantic and Gulf of Mexico. We plan to regularly update these models as new survey data become available, such as the NOAA Atlantic Marine Assessment Program for Protected Species (AMAPPS) surveys and continuing UNCW and NARWSS surveys. Extending the temporal extent of surveys used in our modeling efforts raises important issues concerning the appropriate range of time to be included in the development of models. As the data collection period is increased, changes in population demographics, environmental changes, or climatic trends may be inappropriately incorporated into model development. For example, significant changes in population demographics such as increases in the population of North Atlantic right whales⁴⁶, or changes to species distributions following environmental disturbances such as the *Deepwater Horizon* oil spill, could be masked or exaggerated if temporal trends are not carefully considered. To accomplish this goal, we plan to conduct independent comparative tests of future model revisions to ascertain when past survey data should be removed from the collection when they are no longer representative of current trends and distribution patterns, and explore the possibility of weighting more recent survey data during the model fitting stage.

Methods

Surveys and study area. An overriding goal of our study was to maximize the number of cetacean species modeled with DSMs rather than stratified models. Meeting this goal required many sightings, thus many surveys. We established collaborations with 5 institutions that collectively conducted nearly 1.1 million linear km of line-transect surveys for marine mammals collected in our area of interest under appropriate U.S. federal permits, spanning the years 1992–2014. (Fig. 1, Table 1). We only considered surveys that used two or more observers and adhered to the requirements of distance sampling methodology¹². We acquired the original survey data files, aggregated them into a common spatial database, and manually delineated a study area encompassing the total area surveyed (Fig. 1). To allow for the possibility that species-environment relationships differ between

the Gulf of Mexico and western North Atlantic, we split our study area at 80.5°W into two analysis regions, the Gulf of Mexico (GOM) and East Coast (EC).

Modeled taxa. To facilitate straightforward use of our results within in the U.S. regulatory framework, we sought to model density on a per-species basis. This required that all cetacean sightings have fully-resolved taxonomic identifications, but some species were difficult for observers to discern in the field, resulting in a nontrivial fraction of sightings that were not fully resolved taxonomically (Table 2).

We handled these ambiguous sightings differently based on their degree of ambiguity. The least ambiguous sightings resolved the taxonomic identification to a pair of species, e.g. “fin or sei whale”. When there were a substantial number of these for a pair of species, plus a substantial number of fully-resolved sightings for both, and the literature or exploratory analysis suggested the two exhibit different spatiotemporal distributions, we classified the ambiguous sightings into one species or the other using the random forest classifier *cforest*⁴⁷ from the R *party* package version 1.0–23. The classifier was trained on the fully-resolved sightings, using the species identification as the response variable, and environmental variables (Supplementary Table S3), day of year, or group size as predictor variables, depending on the species. The default parameters for *cforest* were used, with 1000 trees. Receiver operating characteristic (ROC) curve analysis yielded a threshold for classifying sightings into one species or the other; we selected the value that maximized the Youden index.

When we lacked enough fully-resolved sightings to build a classifier, or could not establish a plausible claim that the two species exhibited sufficiently different spatiotemporal distributions, we modeled the two species together as a guild that included both the ambiguous and the fully-resolved sightings of both species. This occurred for the *Kogia* (dwarf and pygmy sperm whales) in both analysis regions and the *Globicephala* (short-finned and long-finned pilot whales) in the EC region.

The next most ambiguous type of sightings resolved the identification to a genus or family of more than two species. This occurred for the *Ziphiidae* family (beaked whales), for which the number of “*Mesoplodon* species” or “*Ziphiidae* species” sightings dominated the number of fully-resolved sightings. We modeled all these as a single “beaked whales” guild.

Finally, the most ambiguous sightings indicated only that a “dolphin” or “whale” was sighted, often with a size qualifier, e.g. “large whale”. We omitted these sightings from our analysis. Although these sightings were a clear minority compared to the fully-resolved sightings, they resulted in an underestimation of density on account of animals being present and sighted but not included in a model.

Density surface modeling. After preparing each taxon’s sightings for modeling, we followed the two-stage density surface modeling approach described by Miller *et al.*²⁰, using covariates associated at the observation level. In the first stage, we fitted detection functions that modeled the detectability of the taxon according to distance from the trackline and other covariates¹². We used a distance sampling approach that relied on a single observer team; over 80% of our surveys used a single team, precluding use of dual-team methods such as mark-recapture distance sampling⁴⁸. For surveys that used two teams, we utilized sightings only from the primary team. To obtain sufficient sightings for the detection functions while accounting for survey-specific influences on detectability, we organized the surveys into a hierarchy according to their platform and protocol similarity and fitted detection functions to groups of surveys within the hierarchy (Supplementary Figs S1, S2). Then we split the survey transects into segments and applied the detection functions to estimate abundance for each segment using a Horvitz Thompson-like estimator¹⁹. To correct for availability and perception biases, we applied estimates of the $g(0)$ parameter¹² reported by the original surveys, or if none were reported, obtained from the literature.

In the second stage, we fitted generalized additive models (GAMs)⁴⁹ that modeled per-segment abundance from spatially- and temporally-varying environmental covariates believed to correlate with cetacean distributions, including physiographic, physical oceanographic, and biological covariates (Supplementary Table S3). Physiographic covariates included depth, slope, and distance to shore, canyons, seamounts, and ecologically relevant isobaths. Physical oceanographic covariates included SST, distance to SST fronts, wind speed, total and eddy kinetic energies, and distance to geostrophic eddies derived from sea surface height observations made by satellites. Biological covariates included chlorophyll concentration observed by satellite, primary production, and potential biomass and production of zooplankton and epipelagic micronekton obtained from a bio-physical ocean model.

Not all temporally-varying covariates were available across the entire time range spanned by the 1992–2014 study period. For example, all of the biological covariates were derived in part from satellite ocean color observations that first became available in late 1997. To address this problem without simply discarding cetacean surveys due to missing covariate values, we tested a series of GAM formulations for each model. We started with just the physiographic covariates, which resulted in no data loss, then added the physical oceanographic covariates, dropping surveys conducted outside 1993–2013 when using covariates derived from satellite altimeters, and finally added the biological covariates, dropping surveys conducted prior to late 1997. To allow for the possibility that different species correlate with temporally-varying covariates at different time scales, we tested both 8-day climatological estimates of covariates (e.g. mean SST for a given 8 days of the year, averaged over 30 years), which reflected only regular seasonal variability, and contemporaneous estimates (e.g. SST on the date of the survey segment, from a daily satellite image), which reflected inter-annual and ephemeral variations, in addition to regular seasonal changes. After examining model performance statistics and other criteria, we selected one model as “best”; we describe the details of this procedure in Supplementary Information.

When the literature suggested a taxon behaves differently during different times of the year or in different parts of the study area, as with baleen whales⁵⁰, we separated the segments into seasonal or sub-regional strata and fitted a separate series of GAMs to each; otherwise we fitted a single series of GAMs to all segments in the analysis region. After selecting the best model for each stratum, we predicted it across the modeled region and

season using gridded maps of the covariates, obtaining density surfaces for each taxon, with associated estimates of uncertainty. In response to specific requests voiced by prospective model users, including NMFS and the U.S. Navy, and reflecting the spatial resolution of environmental covariates, we provided predictions at 10 km resolution. When insufficient sightings of a taxon were available to utilize covariates, we fitted a model without them, resulting in a so-called stratified model that produced a mean density estimate for the modeled region. Our uncertainty estimates reflect the uncertainty in the GAM parameter estimates (or mean density estimate, for stratified models), but do not include uncertainty in detection functions or availability or perception bias estimates, and therefore underestimate actual uncertainty (see Supplementary Information for further discussion).

A detailed description of both stages of the density surface modeling procedure is given as Supplementary Information online.

References

1. Read, A. J., Drinker, P. & Northridge, S. Bycatch of Marine Mammals in U.S. and Global Fisheries. *Conserv. Biol.* **20**, 163–169 (2006).
2. Van Der Hoop, J. M. *et al.* Assessment of Management to Mitigate Anthropogenic Effects on Large Whales. *Conserv. Biol.* **27**, 121–133 (2013).
3. Matkin, C. O., Saulitis, E. L., Ellis, G. M., Olesiuk, P. & Rice, S. D. Ongoing population-level impacts on killer whales *Orcinus orca* following the 'Exxon Valdez' oil spill in Prince William Sound, Alaska. *Mar. Ecol. Prog. Ser.* **356**, 269–281 (2008).
4. Venn-Watson, S. *et al.* Adrenal Gland and Lung Lesions in Gulf of Mexico Common Bottlenose Dolphins (*Tursiops truncatus*) Found Dead following the Deepwater Horizon Oil Spill. *PLoS ONE* **10**, e0126538 (2015).
5. Tanabe, S. Contamination and toxic effects of persistent endocrine disruptors in marine mammals and birds. *Mar. Pollut. Bull.* **45**, 69–77 (2002).
6. DeRuiter, S. L. *et al.* First direct measurements of behavioural responses by Cuvier's beaked whales to mid-frequency active sonar. *Biol. Lett.* **9**, 20130223 (2013).
7. Goldbogen, J. A. *et al.* Blue whales respond to simulated mid-frequency military sonar. *Proc. R. Soc. B Biol. Sci.* **280**, 20130657–20130657 (2013).
8. Henderson, E. E. *et al.* Delphinid behavioral responses to incidental mid-frequency active sonar. *J. Acoust. Soc. Am.* **136**, 2003–2014 (2014).
9. Nowacek, D. P., Thorne, L. H., Johnston, D. W. & Tyack, P. L. Responses of cetaceans to anthropogenic noise. *Mammal Rev.* **37**, 81–115 (2007).
10. Papale, E., Gamba, M., Perez-Gil, M., Martin, V. M. & Giacomina, C. Dolphins Adjust Species-Specific Frequency Parameters to Compensate for Increasing Background Noise. *PLOS ONE* **10**, e0121711 (2015).
11. MacLeod, C. Global climate change, range changes and potential implications for the conservation of marine cetaceans: a review and synthesis. *Endanger. Species Res.* **7**, 125–136 (2009).
12. Buckland, S. T. *et al.* *Introduction to Distance Sampling: Estimating Abundance of Biological Populations*. (Oxford University Press, 2001).
13. Fulling, G. L., Mullin, K. D. & Hubard, C. W. Abundance and distribution of cetaceans in outer continental shelf waters of the US Gulf of Mexico. *Fish. Bull.* **101**, 923–932 (2003).
14. Mullin, K. D. & Fulling, G. L. Abundance of cetaceans in the oceanic northern Gulf of Mexico, 1996–2001. *Mar. Mammal Sci.* **20**, 787–807 (2004).
15. Palka, D. L. *Summer abundance estimates of cetaceans in US North Atlantic navy operating areas*. (2006) Available at: <http://www.nefsc.noaa.gov/publications/crd/crd0603/crd0603.pdf> (Accessed: 5th March 2014).
16. Waring, G. T., Hamazaki, T., Sheehan, D., Wood, G. & Baker, S. Characterization of beaked whale (*Ziphiidae*) and sperm whale (*Physeter macrocephalus*) summer habitat in shelf-edge and deeper waters off the northeast US. *Mar. Mammal Sci.* **17**, 703–717 (2001).
17. Hamazaki, T. Spatiotemporal prediction models of cetacean habitats in the mid-western North Atlantic ocean (from Cape Hatteras, North Carolina, USA to Nova Scotia, Canada). *Mar. Mammal Sci.* **18**, 920–939 (2002).
18. Best, B. D. *et al.* Online cetacean habitat modeling system for the US east coast and Gulf of Mexico. *Endanger. Species Res.* **18**, 1–15 (2012).
19. Hedley, S. L. & Buckland, S. T. Spatial models for line transect sampling. *J. Agric. Biol. Environ. Stat.* **9**, 181–199 (2004).
20. Miller, D. L., Burt, M. L., Rexstad, E. A. & Thomas, L. Spatial models for distance sampling data: recent developments and future directions. *Methods Ecol. Evol.* **4**, 1001–1010 (2013).
21. Becker, E. A. *et al.* Predicting seasonal density patterns of California cetaceans based on habitat models. *Endanger. Species Res.* **23**, 1–22 (2014).
22. Ferguson, M. C., Barlow, J., Reilly, S. B. & Gerrodette, T. Predicting Cuvier's (*Ziphius cavirostris*) and Mesoplodon beaked whale population density from habitat characteristics in the eastern tropical Pacific Ocean. *J. Cetacean Res. Manag.* **7**, 287–299 (2006).
23. Schick, R. *et al.* Community structure in pelagic marine mammals at large spatial scales. *Mar. Ecol. Prog. Ser.* **434**, 165–181 (2011).
24. Griffin, R. B. & Griffin, N. J. Distribution, habitat partitioning, and abundance of Atlantic spotted dolphins, bottlenose dolphins, and loggerhead sea turtles on the eastern Gulf of Mexico continental shelf. *Gulf Mex. Sci.* **21**, 23–34 (2003).
25. Schick, R. S. *et al.* Community structure in pelagic marine mammals at large spatial scales. *Mar. Ecol. Prog. Ser.* **434**, 165–181 (2011).
26. Torres, L. G., Rosel, P. E., D'Agrosa, C. & Read, A. J. Improving management of overlapping bottlenose dolphin ecotypes through spatial analysis and genetics. *Mar. Mammal Sci.* **19**, 502–514 (2003).
27. Rosel, P. E., Hansen, L. & Hohn, A. A. Restricted dispersal in a continuously distributed marine species: Common bottlenose dolphins *Tursiops truncatus* in coastal waters of the western North Atlantic. *Mol. Ecol.* **18**, 5030–5045 (2009).
28. Palka, D. L., Read, A. J., Westgate, A. J. & Johnston, D. W. Summary of current knowledge of harbour porpoises in US and Canadian Atlantic waters. *Rep. Int. Whal. Comm.* **46**, 559–565 (1996).
29. Abend, A. & Smith, T. D. *Review of the distribution of the long-finned pilot whale (*Globicephala melas*) in the North Atlantic and Mediterranean*. (1999) Available at: <https://www.nefsc.noaa.gov/nefsc/publications/tm/tm117/> (Accessed: 31st October 2014).
30. Jefferson, T. A. *et al.* Global distribution of Risso's dolphin *Grampus griseus*: a review and critical evaluation. *Mammal Rev.* **44**, 56–68 (2014).
31. Moors-Murphy, H. B. Submarine canyons as important habitat for cetaceans, with special reference to the Gully: A review. *Deep Sea Res. Part II Top. Stud. Oceanogr.* **104**, 6–19 (2014).
32. Jochens, A. *et al.* *Sperm whale seismic study in the Gulf of Mexico: Synthesis report*. (2008) Available at: <http://www.data.boem.gov/PI/PDFImages/ESPIS/4/4444.pdf> (Accessed: 14th November 2014).
33. Whitehead, H. Trends in cetacean abundance in the Gully submarine canyon, 1988–2011, highlight a 21% per year increase in Sowerby's beaked whales (*Mesoplodon bidens*). *Can. J. Zool.* **91**, 141–148 (2013).
34. Hain, J. H., Ratnaswamy, M. J., Kenney, R. D. & Winn, H. E. The fin whale, *Balaenoptera physalus*, in waters of the northeastern United States continental shelf. *Rep. Int. Whal. Comm.* **42**, 653–669 (1992).

35. Wiley, D. N., Asmutis, R. A., Pichford, T. D. & Gannon, D. P. Stranding and mortality of humpback whales, *Megaptera novaeangliae*, in the mid-Atlantic and southeast United States, 1985–1992. *Fish. Bull.* **93**, 196–205 (1995).
36. Winn, H. E. In *CeTAP: A Characterization of Marine Mammals and Turtles in the Mid- and North Atlantic Areas of the US. Outer Continental Shelf: Final Report*. Ch. 3, 57–133 (University of Rhode Island, 1982).
37. Cole, T. *et al.* Evidence of a North Atlantic right whale *Eubalaena glacialis* mating ground. *Endanger. Species Res.* **21**, 55–64 (2013).
38. Hooker, S. K., Whitehead, H. & Gowans, S. Marine Protected Area Design and the Spatial and Temporal Distribution of Cetaceans in a Submarine Canyon. *Conserv. Biol.* **13**, 592–602 (1999).
39. Heide-Jørgensen, M. P., Witting, L. & Jensen, M. V. Inshore-offshore movements of two fin whales (*Balaenoptera physalus*) tracked by satellite off West Greenland. *J. Cetacean Res. Manag.* **5**, 241–245 (2003).
40. Delarue, J., Todd, S. K., Van Parijs, S. M. & Di Iorio, L. Geographic variation in Northwest Atlantic fin whale (*Balaenoptera physalus*) song: Implications for stock structure assessment. *J. Acoust. Soc. Am.* **125**, 1774 (2009).
41. Risch, D. *et al.* Seasonal migrations of North Atlantic minke whales: Novel insights from large-scale passive acoustic monitoring networks. *Mov. Ecol.* **2**, 24 (2014).
42. Department of the Navy. *Navy OPAREA Density Estimates (NODE) for the Northeast OPAREAS: Boston, Narragansett Bay, and Atlantic City.* (2007) Available at: <http://seamap.env.duke.edu/downloads/resources/serdp/Northeast%20NODE%20Final%20Report.pdf> (Accessed: 20th August 2015).
43. Department of the Navy. *Navy OPAREA Density Estimates (NODE) for the Southeast OPAREAS: VACAPES, CHPT, JAX/CHASN, and Southeastern Florida & AUTEK-Andros.* (2007) Available at: <http://seamap.env.duke.edu/downloads/resources/serdp/Southeast%20NODE%20Final%20Report.pdf> (Accessed: 20th August 2015).
44. Department of the Navy. *Navy OPAREA Density Estimates (NODE) for the GOMEX OPAREA.* (2007) Available at: <http://seamap.env.duke.edu/downloads/resources/serdp/Gulf%20of%20Mexico%20NODE%20Final%20Report.pdf> (Accessed: 20th August 2015).
45. Moore, J. E. *et al.* *Guidelines for Assessing Marine Mammal Stocks: Report of the GAMMS III Workshop, February 15–18, 2011, La Jolla, California.* (2011) Available at: http://www.nmfs.noaa.gov/pr/pdfs/sars/gamms3_nmfsovr47.pdf (Accessed: 23rd September 2015).
46. Pettis, H. M. & Hamilton, P. K. *North Atlantic Right Whale Consortium 2014 annual report card.* (2014) Available at: http://www.narwc.org/pdf/2014_Report_Card.pdf (Accessed: 1st August 2015).
47. Hothorn, T., Buehlmann, P., Dudoit, S., Molinaro, A. & Van Der Laan, M. Survival Ensembles. *Biostatistics* **7**, 355–373 (2006).
48. Burt, M. L., Borchers, D. L., Jenkins, K. J. & Marques, T. A. Using mark-recapture distance sampling methods on line transect surveys. *Methods Ecol. Evol.* **5**, 1180–1191 (2014).
49. Hastie, T. & Tibshirani, R. in *Generalized Additive Models* Ch. 6, 136–171 (Chapman and Hall, 1990).
50. Corkeron, P. J. & Connor, R. C. Why do baleen whales migrate? *Mar. Mammal Sci.* **15**, 1228–1245 (1999).
51. Cole, T., Gerrior, P. & Merrick, R. L. *Methodologies of the NOAA National Marine Fisheries Service Aerial Survey Program for Right Whales (Eubalaena glacialis) in the Northeast U.S., 1998–2006.* (2007) Available at: <http://www.nefsc.noaa.gov/publications/crd/crd0702/> (Accessed: 30th May 2014).
52. Whitt, A., Dudzinski, K. & Laliberté, J. North Atlantic right whale distribution and seasonal occurrence in nearshore waters off New Jersey, USA, and implications for management. *Endanger. Species Res.* **20**, 59–69 (2013).
53. Geo-Marine, Inc. *New Jersey Department of Environmental Protection Baseline Studies Final Report Volume III: Marine Mammal and Sea Turtle Studies.* (2010) Available at: <http://www.nj.gov/dep/dsr/ocean-wind/final-volume-3.pdf> (Accessed: 26th June 2014).
54. Blaylock, R. A. & Hoggard, W. *Preliminary Estimates of Bottlenose Dolphin Abundance in Southern U.S. Atlantic and Gulf of Mexico Continental Shelf Waters.* (1994) Available at: http://docs.lib.noaa.gov/noaa_documents/NMFS/SEFSC/TM_NMFS_SEFSC/NMFS_SEFSC_TM_356.pdf (Accessed: 4th March 2014).
55. Read, A. J. *et al.* Occurrence, distribution and abundance of cetaceans in Onslow Bay, North Carolina, USA. *J. Cetacean Res. Manag.* **14**, 23–35 (2014).
56. Mallette, S. D. *Documenting Whale Migration off Virginia's Coast for Use in Marine Spatial Planning: Aerial and Vessel Surveys in the Proximity of the Virginia Wind Energy Area (VA WEA), VAQF Scientific Report 2014-08.* (2014).
57. Mullin, K. D. & Fulling, G. L. Abundance of cetaceans in the southern US North Atlantic Ocean during summer 1998. *Fish. Bull.* **101**, 603–613 (2003).
58. Davis, R. & Fargion, G. *Distribution and Abundance of Cetaceans in the North-Central and Western Gulf of Mexico, Final Report Volume II: Technical Report.* (1996) Available at: <http://www.data.boem.gov/PI/PDFImages/ESPIS/3/3297.pdf> (Accessed: 20th March 2014).
59. Davis, R. W., Evans, W. E. & Würsig, B. *Cetaceans, Sea Turtles and Seabirds in the Northern Gulf of Mexico: Distribution, Abundance and Habitat Associations. Volume II: Technical Report.* (2000) Available at: <http://www.boemre.gov/itd/pubs/2000/2000-002.pdf> (Accessed: 9th April 2015).
60. Mullin, K. D. *Abundance of Cetaceans in the Oceanic Northern Gulf of Mexico from 2003 and 2004 Ship Surveys.* (2007) Available at: http://www.sefsc.noaa.gov/ldscruises/download/Mullin_2007_Cetacean_%20Abundance_2003-2004.pdf?id=LDS (Accessed: 9th March 2014).

Acknowledgements

Above all, we thank the observers, scientists, engineers, pilots, captains, and crews who collected and shared cetacean and remote sensing observations with us; thank you for the opportunity to analyze the data you produced. Amy Whitt, Suzanne Bates, and Gary Buchanan contributed the NJ-DEP surveys. Phil Hammond, Claire Lacey and colleagues contributed the SCANS and CODA surveys. Vincent Ridoux and colleagues contributed the REMMOA surveys. Odd Aksel Bergstad, Thomas de Lange Wenneck, Leif Nøttestad, and Gordon Waring contributed the MAR-ECO survey under the Norwegian License for Open Government data (NLOD). The altimeter products used in this analysis were produced by SSALTO/DUACS and distributed by AVISO, with support from CNES (<http://www.aviso.altimetry.fr/duacs/>). Dudley Chelton, Michael Schlax, and colleagues contributed a database of geostrophic eddies detected in the AVISO data. Stéphane Maritorena and Erik Fields contributed satellite chlorophyll data from the Ocean Color MEaSURES project (<http://wiki.icess.ucsb.edu/measures/Products>). Patrick Lehodey, Beatriz Calmettes, and colleagues contributed zooplankton and micronekton results from the SEAPODYM ocean model. Thanks to our colleagues for review and advice, especially Susan Barco, Elizabeth Becker, Danielle Cholewiak, Peter Corkeron, Andrew DiMatteo, Megan Ferguson, Karin Forney, Jim Hain, Jolie Harrison, Leila Hatch, Dave Johnston, Elizabeth Josephson, Erin LaBrecque, David L. Miller, Doug Nowacek, Joel Ortega-Ortiz, Richard Pace, Rui Prieto, Andy Read, Denise Risch, Jooke Robbins, Rob Schick, Doug Sigourney, Melissa Soldevilla, Joy Stanistreet, Len Thomas, Kim Urian, Sofie Van Parijs, Danielle Waples, and Simon Wood. Funding for this analysis was provided by the U.S. Navy Fleet Forces Command and by NASA (Grant/Cooperative Agreement Number NNX08AK73G). The VAMSC aerial surveys were funded by the Virginia Coastal Zone Management Program at the Department of Environmental Quality through Task 1 of Grant NA12NOS4190027 and Task 95.02 of Grant NA13NOS4190135 from NOAA,

under the Coastal Zone Management Act of 1972, as amended. The NOAA GOM aerial and ship surveys were primarily conducted under inter-agency agreements between SEFSC and BOEM Gulf of Mexico Region (numbers 16197, 1445-IA09-96-0009, and 15958). The UNCW Navy surveys were funded by U.S. Navy Fleet Forces Command with Joel Bell as the COTR. The UNCW right whale surveys were funded by NOAA. The Navy was given the opportunity to suggest spatial, temporal, and taxonomical resolutions and a geographic extent that would facilitate the Navy's use of the results in U.S. environmental regulatory processes. When the analysis was complete, the Navy was given opportunity to view preliminary results. No funders, including the Navy, participated in the analysis of the data or the preparation of the manuscript.

Author Contributions

P.H., J.R. and B.B. conceived the study. D.P., L.G., K.M., T.C., C.K., W.M., D.P. and G.L. collected the cetacean survey data. J.R., B.B., L.M., E.F. and P.H. conducted the analysis. J.R. wrote the manuscript and prepared the figures. All authors reviewed and edited the manuscript.

Additional Information

Supplementary information accompanies this paper at <http://www.nature.com/srep>

Competing financial interests: The authors declare no competing financial interests.

How to cite this article: Roberts, J. J. *et al.* Habitat-based cetacean density models for the U.S. Atlantic and Gulf of Mexico. *Sci. Rep.* **6**, 22615; doi: 10.1038/srep22615 (2016).



This work is licensed under a Creative Commons Attribution 4.0 International License. The images or other third party material in this article are included in the article's Creative Commons license, unless indicated otherwise in the credit line; if the material is not included under the Creative Commons license, users will need to obtain permission from the license holder to reproduce the material. To view a copy of this license, visit <http://creativecommons.org/licenses/by/4.0/>