



Evaluating the fish aggregation effect of wind turbine facilities by using scientific echo sounder in Nanlong wind farm area, western Taiwan

Ting-Chieh Huang

National Taiwan Ocean University, Taiwan, ROC

Hsueh-Jung Lu

National Taiwan Ocean University, Taiwan, ROC, hjlu@email.ntou.edu.tw

Jia-Rong Lin

National Taiwan Ocean University, Taiwan, ROC

Shih-Hsuan Sun

National Taiwan Ocean University, Taiwan, ROC

Kou-Wei Yen

Marine Fisheries Division, Fisheries Research Institute, Taiwan, ROC

See next page for additional authors

Follow this and additional works at: <https://jmstt.ntou.edu.tw/journal>



Part of the [Fresh Water Studies Commons](#), [Marine Biology Commons](#), [Ocean Engineering Commons](#), [Oceanography Commons](#), and the [Other Oceanography and Atmospheric Sciences and Meteorology Commons](#)

Recommended Citation

Huang, Ting-Chieh; Lu, Hsueh-Jung; Lin, Jia-Rong; Sun, Shih-Hsuan; Yen, Kou-Wei; and Chen, Jing-Yi (2021) "Evaluating the fish aggregation effect of wind turbine facilities by using scientific echo sounder in Nanlong wind farm area, western Taiwan," *Journal of Marine Science and Technology*: Vol. 29 : Iss. 2 , Article 11.

DOI: 10.51400/2709-6998.1084

Available at: <https://jmstt.ntou.edu.tw/journal/vol29/iss2/11>

This Research Article is brought to you for free and open access by Journal of Marine Science and Technology. It has been accepted for inclusion in Journal of Marine Science and Technology by an authorized editor of Journal of Marine Science and Technology.

Evaluating the fish aggregation effect of wind turbine facilities by using scientific echo sounder in Nanlong wind farm area, western Taiwan

Authors

Ting-Chieh Huang, Hsueh-Jung Lu, Jia-Rong Lin, Shih-Hsuan Sun, Kou-Wei Yen, and Jing-Yi Chen

RESEARCH ARTICLE

Evaluating the Fish Aggregation Effect of Wind Turbine Facilities by using Scientific Echo Sounder in Nanlong Wind Farm Area, Western Taiwan

Ting-Chieh Huang^{a,b}, Hsueh-Jung Lu^{a,c,*}, Jia-Rong Lin^a, Shih-Hsuan Sun^a, Kou-Wei Yen^b, Jing-Yi Chen^d

^a National Taiwan Ocean University, 202, No.2, Beining Rd., Keelung, Taiwan

^b Marine Fisheries Division, Fisheries Research Institute, 199, He 1st Rd., Keelung, Taiwan

^c Center of Excellence for the Oceans, National Taiwan Ocean University, 202, No.2, Beining Rd., Keelung, Taiwan

^d Academia Sinica, 128, Academia Road, Section 2, Nankang, Taipei, Taiwan

Abstract

During the stages of construction and operation of the wind power facilities, fishery and fishery resources in the wind farm areas will certainly be changed greatly. One of the major concern is the aggregation effect of wind turbines facility. We use scientific echo sounder together with scuba diving to survey fish aggregations in the wind farm areas. In order to obtain echoes very near the facility, we use tilt beam angle instead of traditional vertical one. Variation of target strength varies while using tilted beam angle were discussed both by *ex-situ* and *in-situ* experiment. In *ex-situ* experiment, we measured TS of sample fish in different attacking beam angle in three different rotation planes, and conducted by setting four different beam angles to detect free-swimming fishes in a cage. We found that fish length estimated by different title angle varied greatly, but maintained linear relationship with target strength at tilt angle of 30° and 60°. In *in-situ* experiment, we developed a special trackline for acoustic survey using 60° tilt beam angle together with scuba diving observation to evaluate fish aggregation effect among two wind turbines, a wind tower and a neighboring artificial reefs in the Nanlong wind farm. The results showed that in the core area (<20 m) near the facilities the target strength distribution patterns and values were consistent with the fish length distribution from scuba diving data. In the joint surveys, we observed that the wind turbines had relatively better fish aggregation effect than nearby neighboring wind towers and artificial reefs.

Keywords: Offshore wind power, Scientific echo sounder, Scuba diving, Target strength

1. Introduction

Due to the depletion of non-renewable energy sources and greenhouse gases that have caused global warming, countries are actively developing renewable energy, of which wind power is one of the fastest growing type [3]. According to the 21st Century Renewable Energy Policy Network (<https://www.ren21.net/>) released in 2020, The share of supply met by renewables

reached historic highs in China, Europe, India and the United States. In China, wind and solar power generation increased 1% and 12% respectively. In the EU and the United Kingdom, while renewables delivered 46% of all power generation, up 8% compared to 2019. The UK 4C offshore website (<http://www.4coffshore.com/>) announced top 20 sea area in the world with the best wind conditions in 2012, 16 of which are located in the Taiwan Strait, and the conditions of

Received 1 July 2020; revised 28 October 2020; accepted 30 November 2020.
Available online 21 May 2021.

* Corresponding author: National Taiwan Ocean University, 202, No.2, Beining Rd., Keelung, Taiwan
E-mail address: hjlu@email.ntou.edu.tw (H.-J. Lu).



offshore wind farm are excellent. It is a very good opportunity for Taiwan, which has extremely limited onshore space, so in Taiwan government's renewable energy development policy, wind power has become a key direction of alternative energy [2]. According to the 4C offshore website, the power generation efficiency of the offshore wind farm is higher than that of the onshore wind farm, and the total potential wind power in Taiwan can reach 150 gigawatts (<https://web3.moeaboe.gov.tw/>). The development of offshore wind power can provide more economic development and job opportunities for Taiwan's wind power industry, including electrical, steel and fleet development and other related industries [29].

Taiwan government planned to construct a thousand of wind turbines in the western offshore area where is traditional fishing ground. Many conflicts between fishery and wind farm have to be face with and among them fish aggregating effect by wind power facilities is a positive effect that deserves attention. For example, Wilhelmsson et al [30]. conducted a study on the benefits of fish gathering and the impact of fish populations in offshore wind farm. They found that the species richness and biological index in the wind farm area and adjacent areas were not different, but the fish school structure near the wind turbine was different, and the fish abundance was higher. The studies of De Troch [4] and Hooper [11] both pointed out that the offshore wind farm also had the effect of like Fish Aggregating Device (FAD).

Reubens et al [24]. pointed out that there is no significant difference in the abundance between the Atlantic cod (*Gadus morhua*) and Pouting (*Trisopterus luscus*) between the stations inside and outside the wind farm area, also pointed out that there is no evidence that the wind farm area have an ecological trap effect. Dunlop et al [5]. conducted a study on the influence of the current of submarine cable in offshore wind farm, and the results showed that there was no significant difference between the existing amount of the submarine cable and the area away from the cable. Hvidt et al [12]. compare the abundance of fish inside and outside the Danish offshore wind farm, and found that although there is a slightly higher trend in the wind farm, there is no significant difference.

According to the above researches, there is no consistent conclusion on the fish aggregating effect of offshore wind farm, but it has different effects with regional and community types. During the

early stage of the offshore wind farm construction in western Taiwan, fishery activities are prohibited, therefore it is impossible to evaluate fish aggregating effect of individual constructed wind turbine by fishery dependent method. Scientific echo sounder is one of the best choices because it has direct, three-dimensional, fast, and non-destructive characteristics [19,23,26], which is the most convenient and objective method in many fishery-independent survey methods for assessing the effect of fish populations. The general acoustic surveys were carried out by vertical beam detection. However, the survey area is limited when general acoustic survey is applied because a research vessel has to keep a safe distance from the marine structure. In such circumstance, it is necessary to replace the traditional vertical beam with a tilt beam [7,16], with which the safety of navigation increased and the relationship between fish schools and wind turbines can be better detected (Fig. 1). Rodríguez et al [25]. pointed out that the backscattering strength received from horizontal detection will cause considerable differences and this change may affect result of the resource assessment.

In the early development stage of the offshore wind farm in the Taiwan Strait, to collect fishery independent proof to fish aggregating effect of newly constructed wind power facilities is important. The objective of this study is to develop an acoustic survey method in near wind power facility and validate the method. We conducted both *ex-situ* and *in-situ* surveys in this study to evaluate change of the echo intensity under different beam angles through *ex-situ* experiments to find suitable detection angle. In the *in-situ* experiment, we developed a special trackline surrounding target facilities in the wind farm area for joint acoustic and scuba diving surveys. The fish aggregation effect of wind turbines, wind power and artificial reef in the offshore wind farm area were investigated and the credibility of the acoustic data was verified by scuba diving.

2. Materials and Methods

2.1. *Ex-situ* survey (tank experiments)

In order to understand the possible problem arose from a horizontal beam angle, two experiments were designed to detect target strength (TS) for free-swimming fish and suspended fish, respectively. Simrad EY60 echosounder with split-beam 200 kHz transducer (nominal angle of 7°) were used in both *ex-situ* and *in-situ* experiment in this study. The parameters settings of acoustic system for tank experiment are listed in Table 1, while the water

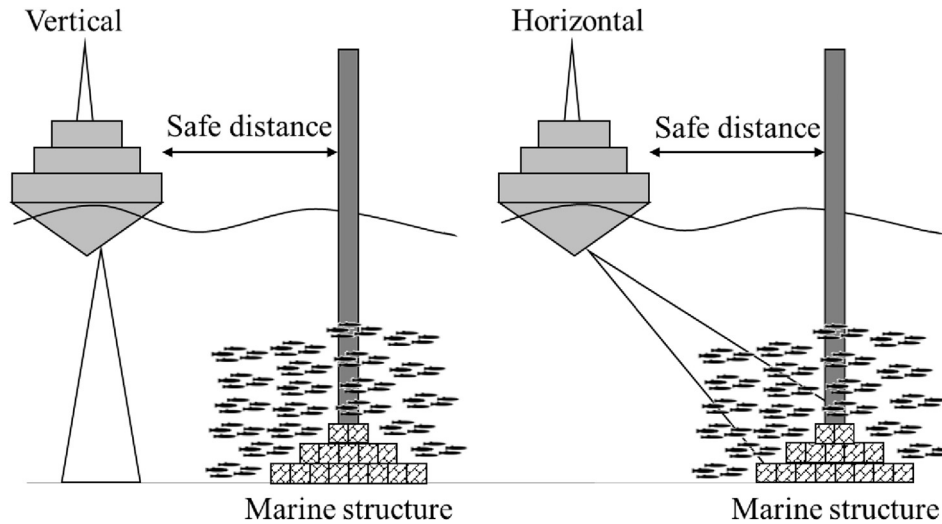


Fig. 1. The difference of navigation safety between vertical and horizontal beams when conducting valid detection for fish associated with marine structure.

Table 1. Acoustic parameters of Simrad EY60 system setting for tank experiments for suspended fish and free swimming fish

Parameter	Setting	Unit
Ping interval	2	ping/s
Frequency	200	KHz
Absorption coefficient	0.0838	dB/m
Sound Velocity	1537.4	m/s
Transducer gain	26.5	dB
Transmitted pulse length	0.064	ms
Power	100	watt
Two-Way beam angle	-20.1	dB
Minor axis 3 dB beam angle	6.74	degree
Major axis 3 dB beam angle	6.82	degree
Minor axis 3 dB offset angle	-0.07	degree
Major axis 3 dB offset angle	0	degree

temperature and salinity are 26.3°C and 31 psu, respectively. We used black seabream (*Acanthopagrus schlegelii*) for the tank experiments, because it is highly tolerant to changes in temperature and salinity and is widely distributed in near shore area.

In the case of suspended fish, we measured TS values while rotating the fish in rolling, yawing and pitching plane. There were 8 black seabreams with fork length from 7.0 to 22.9 cm (Table 2) for TS measurement. A rotator was set on the top of the tank and the fish were anesthetized under it then control angle of incidence beam by the rotator (Fig. 2A). The three orientations to detect every 10°

Table 2. Size information of black seabream used for tank experiments

Experiment	Fork length (cm)		Fish numbers
	Range	Mean (\pm SD)	
Suspended fish	7.0–22.9	13.76 \pm 6.6	8
Free swimming fish	14.9–23.4	19.54 \pm 1.9	30

and collect 30 seconds of data at a time. All TS values obtained in every incident angle (every 10°) were averaged to represent the TS of that incident angle for the fish. A total of 360° clockwise rotation is performed.

In the free-swimming fish experiment, we used beam angles of 0° (horizontal), 30°, 60° and 90° (vertical) degrees to detect free-swimming fish. We used two tanks in this experiment (Fig. 2B and C) to measure TS for 30 fish with fork length from 14.9 to 23.4 cm (Table 2). The TS for these fish were measured one by one. Each fish was put into the cage after measuring its fork length, and the detection time for each fish was 10 minutes. Linear regression equations as follow were then established for each tilt angle situation after every average TS for the 30 fish were determined:

$$TS = a \times \log(FL) + b \quad (1)$$

TS: target strength (dB)

a, b: constant

FL: fork length (cm)

2.2. In-situ experiment

The *in-situ* experiment were conducted in Nan-long wind farm area located in Maoli County, Taiwan, where water depth is between 20 to 45 m. As shown in Fig. 3, there are four related wind farm facilities, namely wind tower, offshore wind turbine#1, offshore wind turbine#2 and artificial reef. The wind tower was built in August, 2016, and two wind turbines were constructed and operation in October, 2016.

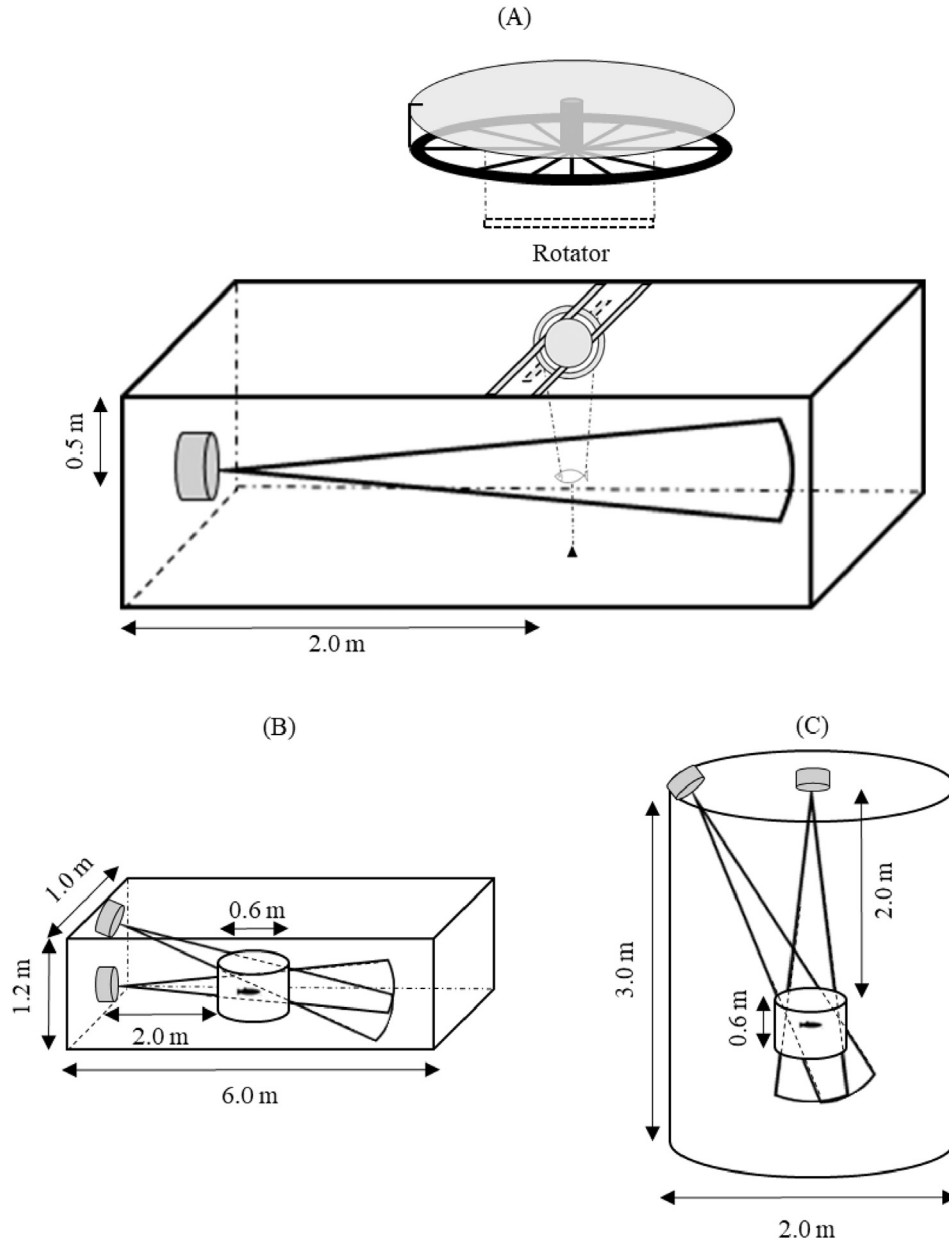


Fig. 2. Two tanks setting for ex-situ experiments. (A) suspended fish experiment setting. (B) free-swimming fish experiment for tilt angles of 0° and 30°. (C) free-swimming fish experiment for tilt angles of 60° and 90°.

We have two joint surveys, one during 8-9th June, 2017 and the other during 17-18th Aug., 2017. The scuba diving observations were conducted simultaneously within 20 m away from the center of the facility, and the observation was mainly photography, and visual observation records. In order to facilitate the comparison with scuba diving data, we conduct surveys with 10 pings per second, and average the TS values within the scuba diving area. Three to four divers as a group observed and recorded samples in the waterproof record book. The data items recorded are the species, number

and visual estimation of fish length using method by Harvey et al [10].

Fig. 4 showed the route designed for acoustic survey with which we can detected the facilities three times from different direction. Due to fishing within the radius of 500 m from the wind power facilities was prohibited by law, the length of the three tracklines in Fig. 4 were set at 1000 m. An FRP fishing boat with length of 12.55 m and gross tonnage of 18.35 tons was used in this study. Speed was maintained at 3–4 knot during the acoustic survey. The acoustic system is also Simrad EY60

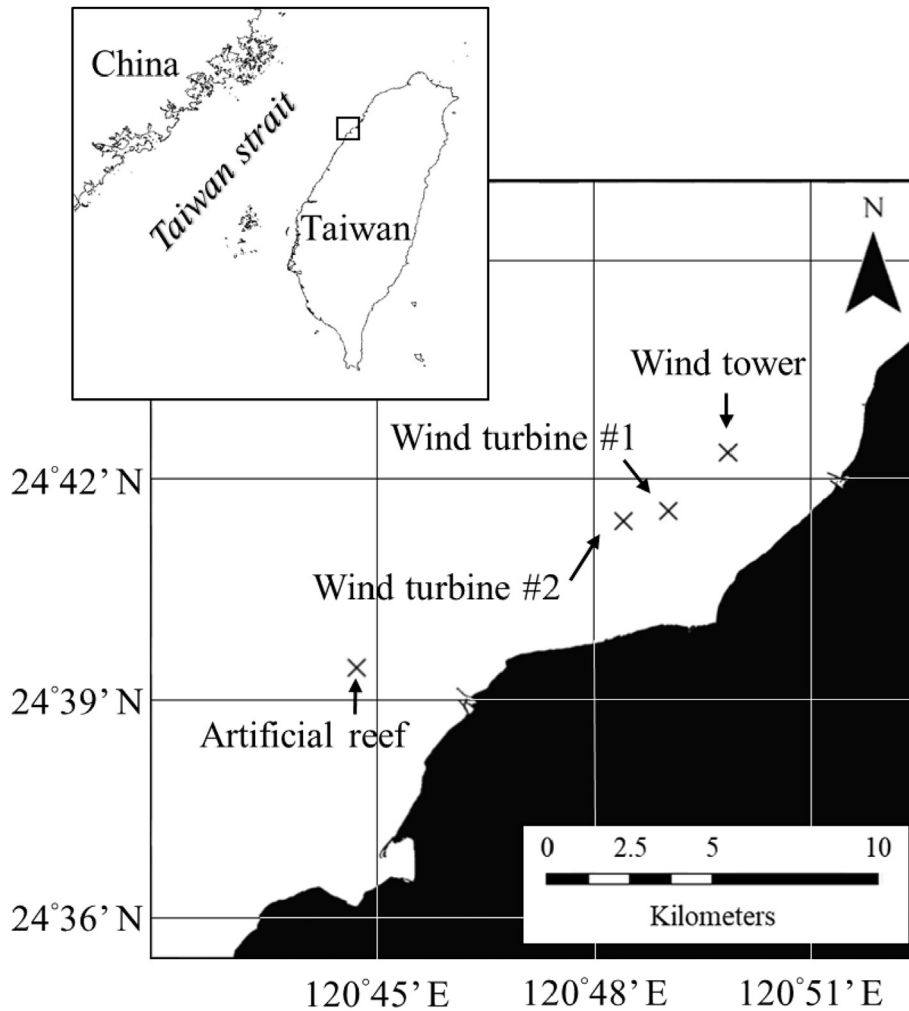


Fig. 3. Locations of the four facilities for acoustic and scuba diving surveys in Nanlong wind farm area, Taiwan.

echosounder and the parameters are as Table 3. Transducer was mounted at the port side of the vessel using pole mounts at a depth of 1.5 m below the surface. The direction of transmitted beam is perpendicular to the trackline in horizontal and 60° tilt down from surface in vertical.

The Sv threshold is set to -65 dB to facilitate comparison between different facilities. Echoes data water shallower than 3 m is excluded due to susceptible to bubbles and noise interference from the ship. Zooplankton and non-biological echo, such as gill nets, bubble from diver, facilities and etc, is excluded manually. The average volume backscattering for a given range from a facility were calculated by Equation (2):

$$\overline{Sv} = 10 \log \left(\frac{\sum_{i=1}^n \gamma_i 10^{\frac{Sv_i}{10}}}{\sum_{i=1}^n \gamma_i} \right) \quad (2)$$

i : index of ESDU (elementary sampling distance unit, 50 m) Marchal et al [22].

n : Total number of ESDU

γ_i : if 0 for the each ESDU without samples, otherwise 1.

Sv_i : mean Sv in each ESDU

\overline{Sv} : mean Sv of total ESDU

3. Results

3.1. Estimated lengths by different attacking beam angles

In suspended fish experiment, we measured TS for 8 fish of different lengths by different angle of incidence. Fig. 5 show a general situation of TS variation in different rotation plane. In rolling plane, the TS by ventral and dorsal are much lower than by sides (Fig. 5A). In pitching plane, the TS are relatively stable in all directions (Fig. 5B). In yawing

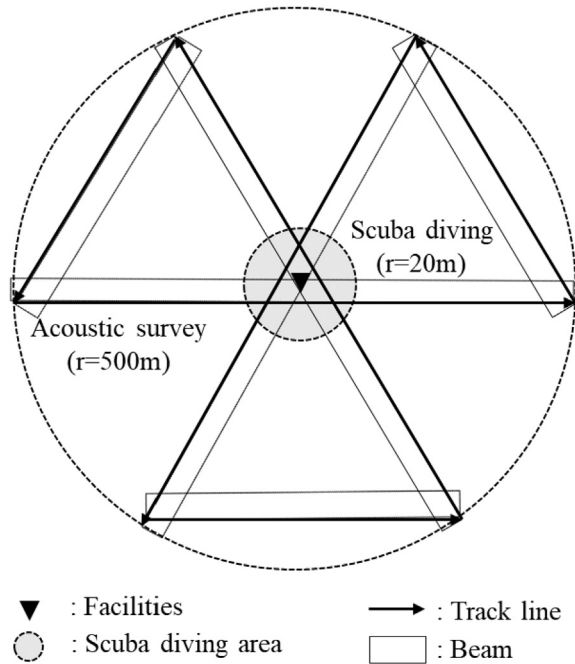


Fig. 4. Special track line designed for acoustic survey with 3 passes through the facilities (wind turbines, wind tower or artificial reef), total track line is 3 nmi. Scuba diving observations were conducted within 20 m around the facilities.

plane, the TS by sides are higher than by head and tail (Fig. 5C). Fig. 5 can also be found that when pitching plane, TS variation is mainly affected by fish length, and when rolling and yawing plane, in addition to the fish length, the different attacking beam angle will also cause the TS variation.

In free-swimming experiment, we measured TS for 30 fish of different lengths by different attacking beam angle. Fig. 6 shows the linear regulation result of different attacking beam angle and mean TS. At 0°, the linear relationship does not exist. At 30° and 60°, both R-square are higher than 0.9 (<0.01) and the slope is high. At 90° (traditional), it has a better

Table 3. Acoustic parameters of Simrad EY60 system setting for in-situ survey

Parameter	Setting	Unit
Ping interval	10	ping/s
Frequency	200	KHz
Absorption coefficient	0.0782	dB/m
Sound Velocity	1538.7	m/s
Transducer gain	25.6	dB
Transmitted pulse length	0.256	ms
Power	100	watt
Two-Way beam angle	-20.6	dB
Minor axis 3 dB beam angle	6.74	degree
Major axis 3 dB beam angle	6.82	degree
Minor axis 3 dB offset angle	-0.07	degree
Major axis 3 dB offset angle	0	degree

linear relationship with lower slope. Therefore, it is feasible to adopt tilt beam angle detection to replace vertical detection when necessary.

3.2. Comparison between acoustic and scuba diving

As shown in Table 4, fish length observed in the artificial reef is mostly between 5 and 10 cm, but in wind tower, wind turbine #1 and wind turbine #2, fish length were mostly less than 5 cm. In wind tower, the fish species sighted were highest (32), while in the artificial reef the species (12) sighted were the lowest. Tables 5 and 6 shows the species composition observed by scuba diving at the four facilities, in which the most species are *Chromis fumea* and *Neopomacentrus cyanomos* respectively. Fig. 7 indicated that the length distributions estimated by acoustic are generally consistency with those estimated by scuba diving. In artificial reef

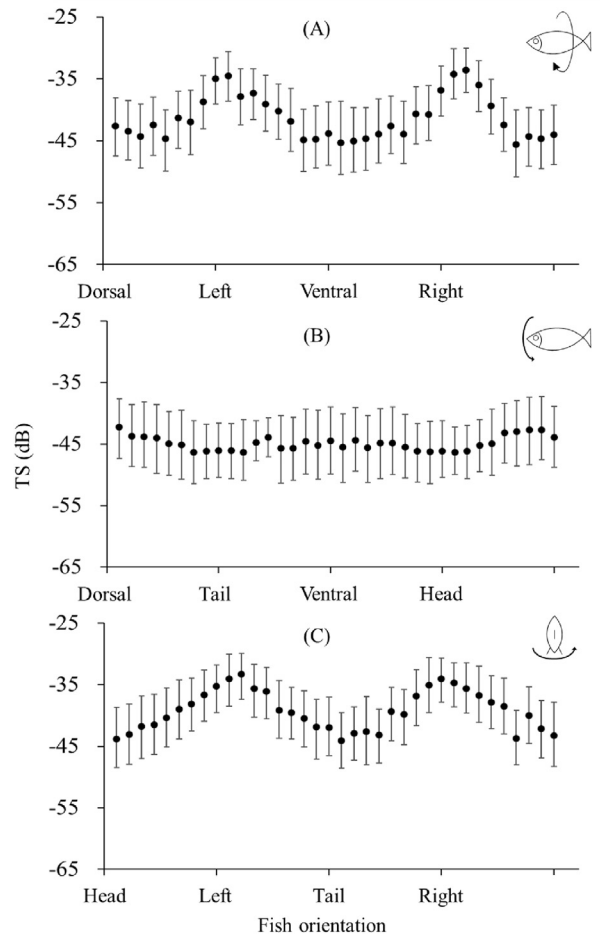


Fig. 5. TS variation in different rotation plane (real fish from 14.9 cm to 23.4 cm), error bars represent the maximum and minimum value. (A) rolling plane, relative to dorsal; (B) pitching plane, relative to dorsal; C: yawing plane, relative to head.

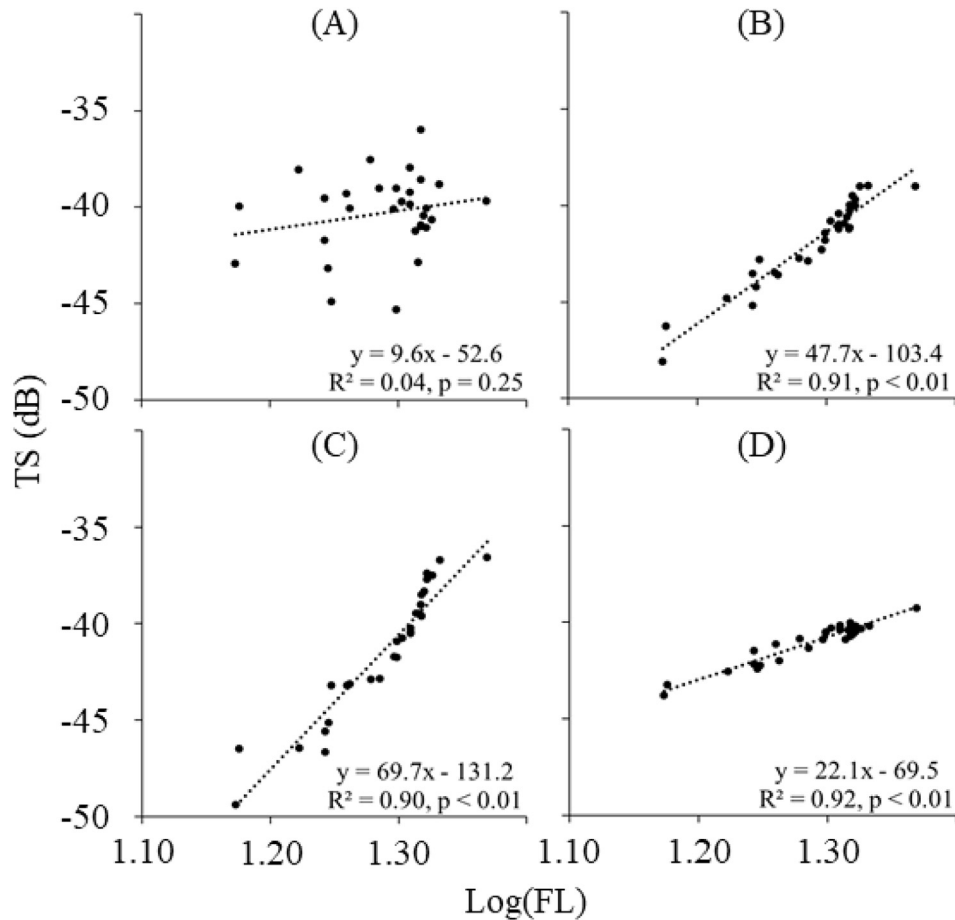


Fig. 6. Linear regression of Equation (1) between TS obtained from tank experiment by different tilt angles and Log (FL) ($N = 30$). (A) 0° ; (B) 30° ; (C) 60° ; (D) 90° .

and wind turbine#2, the relationship between the TS and the scuba diving observations is basically the same.

3.3. Fish aggregation effects evaluated by acoustics

Both wind turbines have relatively high mean Sv values in ranges of 20 m and 500 m, followed by the wind tower, and the artificial reef has lowest mean Sv (Fig. 8). According to the two *in-situ* acoustic

Table 4. Estimated number of fish, fish length and number of species by scuba diving observation at four facilities in wind farm area

Fish length (cm)	Artificial reef	Wind tower	Wind turbine#1	Wind turbine#2
<5	65	745	251	134
5-10	70	288	132	62
10-15	57	103	16	1
15-20	18	0	1	0
20-25	0	0	0	0
>30	1	2	1	0
Total	211	1138	401	197
Total species	12	32	21	15

surveys, it is obvious that the effect of the two wind turbines on fish aggregation is better than that of wind tower and artificial reef.

4. Discussion and Conclusion

Fish always to produce more yawing action than rolling and pitching, because fish like to change direction when swimming. Horizontal beam may always cause higher variation of TS (Figs. 5 and 6). The drastic changes of TS in the rolling can be attributed to the swimming behavior of the fish, which leads to a loss of linear relationship in the horizontal direction [16].

In the special environment (shallow waters, marine structures), limit of detection range and navigation safety may cause in capability of traditional echo sounding. Changing the attacking beam angle of transducer will be a good solution [14,15,17]. In the process of changing beam angle from vertical to horizontal, backscattering echo will be change from dorsal part to lateral part of a fish. In traditional

Table 5. Species composition obtained by scuba diving observation at four facilities in wind farm area during 8–9th June

Species	Artificial reefs	wind tower	wind turbine#1	wind turbine#2
Apogonichthyoides cathetogramma			1	2
Apogon semilineatus		2		
Rhabdamia gracilis		100		
Decapterus sp.			1	
Trachurus japonicus			1	
Chaetodon modestus	1	3	1	1
Coradion altivelis	1			
Heniochus acuminatus	1	8	2	1
Goniistius zonatus	1			
Diodon holocanthus	2	9	3	1
Platax teira		1	3	
Parapristipoma trilineatum	10	100	30	5
Plectorhinchus pictum		1	1	
Microcanthus strigatus		1		
Choerodon azurio			2	
Halichoeres poecilepterus		1		
Halichoeres scapularis				1
Labroides dimidiatus	1	2		1
Leiognathus spp.		200		
Lutjanus argentimaculatus		4		
Lutjanus fulviflamma		5	3	1
Lutjanus monostigma		11		
Pterocaesio digramma		60		
Scolopsis vosmeri		6	2	1
Oplegnathus fasciatus		1		
Chaetodontoplus septentrionalis	1	2		
Pomacanthus semicirculatus		1		
Abudefduf sexfasciatus			10	
Abudefduf vaigiensis			10	
Chromis fumea	10	300	5	10
Neopomacentrus cyanomos	1	300	10	10
Scatophagus argus		1		
Dendrochirus zebra		1		
Pterois radiata		1		
Pterois volitans		1		
Sebastiscus marmoratus		2		
Cephalopholis boenak		7	8	6
Diploprion bifasciatum			1	1
Epinephelus areolatus	1	1		
Epinephelus awoara		1	1	
Epinephelus malabaricus				
Grammistes sexlineatus		1		
Pseudanthias squamipinnis		4		
Siganus fuscescens	1		1	1
Tripterygiidae gen. spp			8	10

Table 6. Species composition obtained by scuba diving observation at four facilities in wind farm area during 17–18th Aug

Species	Artificial reefs	wind tower	wind turbine#1	wind turbine#2
Apogon aureus		6		
Apogon cathetogramma				1
Archamia dispilus		30		
Selaroides leptolepis		50	20	3
Coradion altivelis	1			
Heniochus acuminatus	6	5	6	3
Cheilodactylus quadricornis		1		
Cirrhitichthys aureus	8			
Platax teira		2	8	3
Parapristipoma trilineatum	15	120	50	30

(continued on next page)

Table 6. (continued)

Species	Artificial reefs	wind tower	wind turbine#1	wind turbine#2
<i>Kyphosus cinerascens</i>		1		
<i>Microcanthus strigatus</i>	2		2	3
<i>Bodianus diana</i>		1		
<i>Choerodon azurio</i>			1	
<i>Halichoeres poecilepterus</i>			3	
<i>Labroides dimidiatus</i>		3	2	1
<i>Thalassoma lutescens</i>			1	1
<i>Leiognathus spp</i>	100			
<i>Lutjanus fulviflamma</i>		3	3	3
<i>Lutjanus monostigma</i>		8		1
<i>Lutjanus vitta</i>		3	6	4
<i>Caesio caerulea</i>		100		
<i>Pterocaesio digramma</i>	1	50	10	5
<i>Monodactylus argenteus</i>			1	
<i>Gymnothorax favagineus</i>			1	
<i>Scolopsis vosmeri</i>		5	4	4
<i>Oplegnathus punctatus</i>	1	1		
<i>Chaetodontoplus septentrionalis</i>		2	1	
<i>Pomacanthus semicirculatus</i>		1		
<i>Abudefduf vaigiensis</i>		10	5	20
<i>Chromis fumea</i>		10	10	
<i>Neopomacentrus cyanomos</i>	30	800	200	100
<i>Ilisha melastoma</i>	30			
<i>Pterois volitans</i>		1		
<i>Sebastiscus marmoratus</i>	1			
<i>Cephalopholis boenak</i>	1	1	1	2
<i>Sphyaena flavicauda</i>	50	150	50	50
<i>Zanclus cornutus</i>		2		

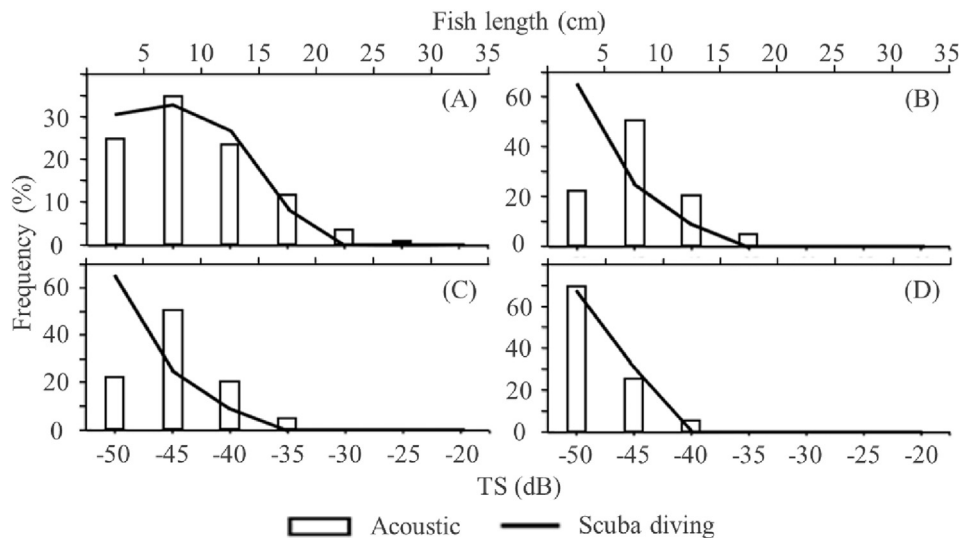


Fig. 7. Fish length distribution obtained by scuba diving and acoustic estimation (transformed by $TS = 19.1 \log L + 0.9 \log \lambda - 34.2$ [18]). (A) Artificial reefs; (B) Wind tower; (C) Wind turbine #1; (D) Wind turbine #2.

survey, transducer usually faced toward sea bottom, therefore TS information were mainly base on dorsal aspect of fish [6,8,18,21]. The study by Bosswell (2008) [31] for side-aspect target strength measurements of bay anchovy (*Anchoa mitchilli*) and Gulf menhaden (*Brevoortia patronus*) also found that TS

has a higher value on the side-aspect. The study also suggested that the availability of side-aspect TS can be increased by the adjustment of pulse duration.

In the tank experiment, we confirmed that the linearity between TS and fish length reduce gradually from vertical to horizontal detection (Fig. 6). Tilt

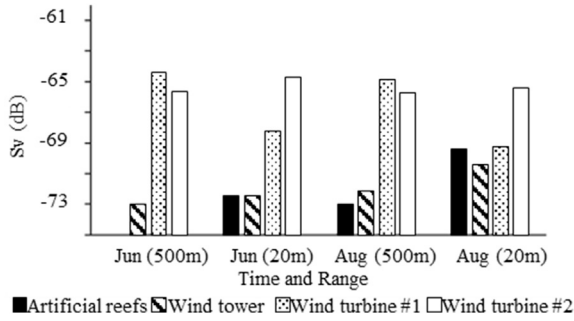


Fig. 8. Comparison of fish aggregation by volume backscattering strength (Sv) among four facilities in Nanlong wind farm area.

beam angles from 30° and 60° are applicable in *in-situ* surveys. We used 60° in the *in-situ* survey because considering the vessel size and water depth in the wind farm area. Fig. 9 shows some examples of echograms with tilt angles of 60°. In surface water, tilt beam angle can effectively reduce the dead zone of the surface water near the wind facilities. The design of special trackline and the use of tilt beam angles are suitable for acoustic survey around the wind turbine. However, when taking the advantage of tilt beam survey near obstacle waters like wind farm area, the problem of increased dead zone near the sea bottom need to be considered seriously. As shown in Tables 4 and 5, the wind tower and the wind turbine#1, scuba diving observed a large

number of fishes less than 5 cm, but they may hide in the dead zone of acoustic detection, which resulting in big inconsistency of length distribution (Fig. 7). Our consideration will be given to using both vertical and tilted beams to reduce the impact of acoustic dead zone in future studies. However, TS-related research about side-aspect is still insufficient in Nanlong wind farm area, also that may cause deviation in length estimation, and TS formula based on the side-aspect needs to be discussed in more depth in order to research the horizontal detection data more completely.

Surveys conducted by Hvidt et al [12]. in wind farm area using tilt beam angle and actual catches confirmed there were no expectation of any negative effects by wind turbines. In this study, we found that wind facilities have a better fish aggregation effect than artificial reef (Fig. 8), both wind turbines has higher Sv values, whether at a distance of 20 m or 500 m from the facility. The results of acoustic survey directly show fish aggregation effect of the two wind turbines. The species and abundance information obtained by scuba diving within 20 m of the wind turbines also prove the aggregation effect, which including some fish hidden in acoustic dead zone (Tables 4 and 5). Wilhelmsson et al [30]. suggested that offshore wind farms can aggregate small demersal fish according to their scuba diving observation. The present study first attempt to study

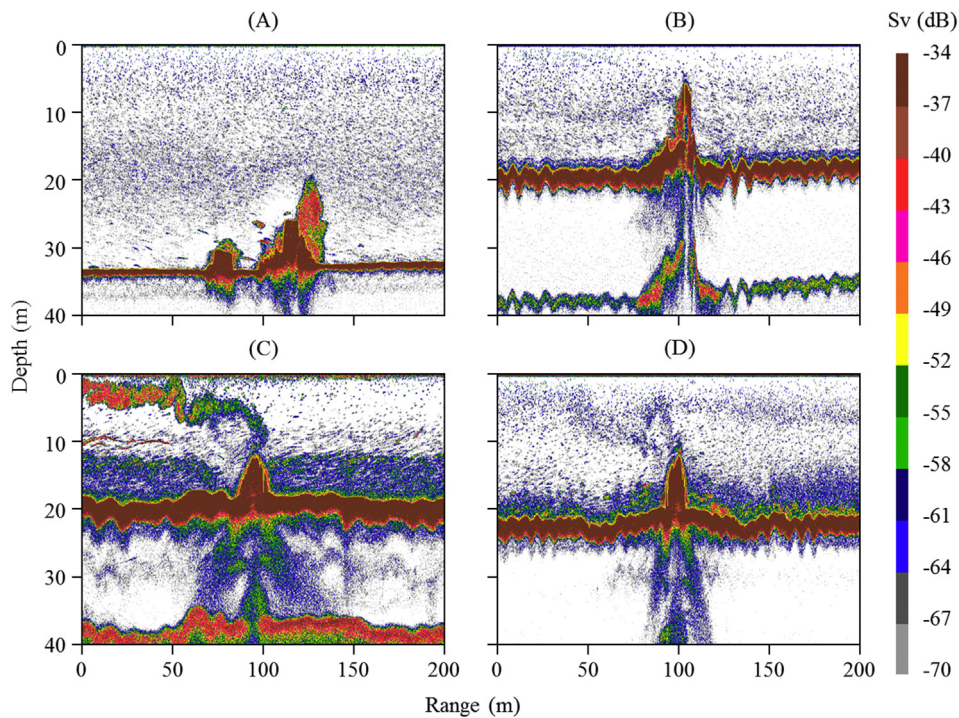


Fig. 9. Echograms of four facilities detected by tilt angle of 60°. (A) Artificial reefs; (B) Wind tower; (C) Wind turbine#1; (D) Wind turbine#2.

fish aggregation effect of wind turbines by joint surveys of both acoustic and scuba diving.

The two wind turbines were only constructed about 1 year before the acoustic surveys. The following are the possible factors causing wind facilities have relative better performance of fish aggregation: (1) The artificial reefs are too old, so the fish aggregation effect is getting lost. The artificial reef surveyed was set in February 2004, which has been 15 years old. The artificial reefs are disintegrating and collapsing, the fish aggregation effect has gradually degraded [27,28]. (2) When setting up offshore wind facilities, a flushing protection design was set up at surrounding of the bottom to protect the base of the wind turbines. These structures also formed habitat space for fish to enhance the effect of the fish aggregation.

According to the government's wind power development plan, thousands of offshore wind turbines will be built in the western of Taiwan in the future. It is necessary to use more independent fishery surveys and acoustic survey by scientific echosounder will be one of them. The survey method developed in this study can be applied in more new constructed wind turbines. When large cluster of wind turbine are formed, for navigation safety it will be more necessary to use tilt beam when conducting acoustic survey across the matrix of wind turbines.

Acknowledgement

This study was supported the Ministry of Science and Technology (MOST 107-2119-M-110-001- and MOST 108-2611-M-019-001 -), Taiwan.

References

- [2] Bureau of Energy, Ministry of Economic Affairs. 4-year promotion plan for wind power generation, 106 National Power Supply and Demand Report. 2017. p. 22 (in Chinese).
- [3] Carrasco JM, Franquelo LG, Bialasiewicz JT, Galván E, PortilloGuisado RC, Prats MAM, Moreno-Alfonso N. Power-electronic systems for the grid integration of renewable energy sources: A survey. *IEEE Trans Ind Electron* 2006;53(4):1002–16.
- [4] De Troch M, Reubens JT, Heirman E, Degraer S, Vincx M. Energy profiling of demersal fish: A case-study in wind farm artificial reefs. *Marine environmental research* 2013;92:224–33.
- [5] Dunlop ES, Reid SM, Murrant M. Limited influence of a wind power project submarine cable on a Laurentian Great Lakes fish community. *J Appl Ichthyol* 2016;32(1):18–31.
- [6] Fleischer GW, Argyle RL, Curtis GL. *In situ* relations of target strength to fish size for Great Lakes pelagic planktivores. *Trans Am Fish Soc* 1997;126(5):786–94.
- [7] Godlewska M, Frouzová J, Kubecka J, Wiśniewolski W, Szlakowski J. Comparison of hydroacoustic estimates with fish census in shallow Malta Reservoir—which TS/L regression to use in horizontal beam applications? *Fish Res* 2012;123–124:90–7.
- [8] Gurshin CWD. Target strength measurements of juvenile blueback herring from the Mohawk River, New York. *North Am J Fish Manag* 2012;32(2):381–6.
- [10] Harvey E, Fletcher D, Shortis M. Estimation of reef fish length by divers and by stereo-video: a first comparison of the accuracy and precision in the field on living fish under operational conditions. *Fish Res* 2002;57(3):255–65.
- [11] Hooper T, Beaumont N, Hattam C. The implications of energy systems for ecosystem services: a detailed case study of offshore wind. *Renew Sustain Energy Rev* 2017;70:230–41.
- [12] Hvidt CB, Leonhard SB, Klausstrup M, Pedersen J. Hydro-acoustic monitoring of fish communities in offshore wind farms. *Horns Rev Offshore Wind Farm Annu Rep* 2006:54.
- [14] Knudsen FR, Sægrov H. Benefits from horizontal beaming during acoustic survey: application to three Norwegian lakes. *Fish Res* 2002;56(2):205–11.
- [15] Kubecka J, Wittingerova M. Horizontal beaming as a crucial component of acoustic fish stock assessment in freshwater reservoirs. *Fish Res* 1998;35(1-2):99–106.
- [16] Kurnia M, Iida K, Mukai T. Characteristics of three-dimensional target strength of swim bladdered fish. *The Journal of the Marine Acoustics Society of Japan* 2012;39(3):93–102.
- [17] Lilja J, Keskinen T, Marjomäki TJ, Valkeajärvi P, Karjalainen J. Upstream migration activity of cyprinids and percids in a channel, monitored by a horizontal split-beam echosounder. *Aquat Living Resour* 2003;16(3):185–90.
- [18] Love RH. Dorsal-aspect target strength of an individual fish. *J Acoust Soc Am* 1971;49(3B):816–23.
- [19] MacLennan DN. Acoustical measurement of fish abundance. *J Acoust Soc Am* 1990;87(1):1–15.
- [21] Mehner T, Gassner H, Schulz M, Wanzenböck J. Comparative fish stock estimates in Lake Stechlin by parallel split-beam echosounding with 120 kHz. *Arch Hydrobiol Spec Issues Adv Limnol* 2003;58:227–36.
- [22] Marchal E, Petitgas P. Precision of acoustic fish abundance estimates: separating the number of schools from the biomass in the schools. *Aquat Living Resour* 1993;6(3):211–9.
- [23] Ohshimo S. Acoustic estimation of biomass and school character of the Japanese anchovy *Engraulis japonica* in the East China Sea and the Yellow Sea. *Fish Sci* 1996;62(3):344–9.
- [24] Reubens JT, Pasotti F, Degraer S, Vincx M. Residency, site fidelity and habitat use of Atlantic cod (*Gadus morhua*) at an offshore wind farm using acoustic telemetry. *Marine Environmental Research* 2013;90:128–35.
- [25] Rodríguez-Sánchez V, Encina-Encina L, Rodríguez-Ruiz A, Monteoliva A, Sánchez-Carmona R. Horizontal target strength of *Cyprinus Carpio* using 200 kHz and 430 kHz split-beam systems. *Fish Res* 2016;174:136–42.
- [26] Rose GA. A review of problems and new direction in the application of fisheries acoustics on the Canadian East Coast. *Fish Res* 1992;14(2-3):105–28.
- [27] Shao KT, Lu HJ, Huang JS, Chen TJ, Lin SM, Wu SP. Biological survey in artificial reefs and aquatic breeding and protection zones in northern Taiwan. 2018 project report of Fishery Agency. Council of Agriculture; 2018. p. 219 (in Chinese).
- [28] Shao KT, Lu HJ, Huang JS, Chen TJ, Lin SM, Wu SP, Lin CW. Biological survey in artificial reefs and aquatic breeding and protection zones in northern Taiwan. 2019 project report of Fishery Agency. Council of Agriculture; 2019. p. 219 (in Chinese).
- [29] Simas M, Pacca S. Assessing employment in renewable energy technologies: A case study for wind power in Brazil. *Renew Sustain Energy Rev* 2014;31:83–90.
- [30] Wilhelmsson D, Malm T, Ohman MC. The influence of offshore windpower on demersal fish. *ICES J Marine Sci* 2006;63(5):775–84.
- [31] Side-aspect target-strength measurements of bay anchovy (*Anchoa mitchilli*) and Gulf menhaden (*Brevoortia patronus*) derived from ex situ experiments. *ICES J Marine Sci* 2008;65(6):1012–20.